

WAAS CH 62939 W31B	APP CRS 320°	Rwy Idg TDZE 5289 Apt Elev 5320
--	------------------------	---

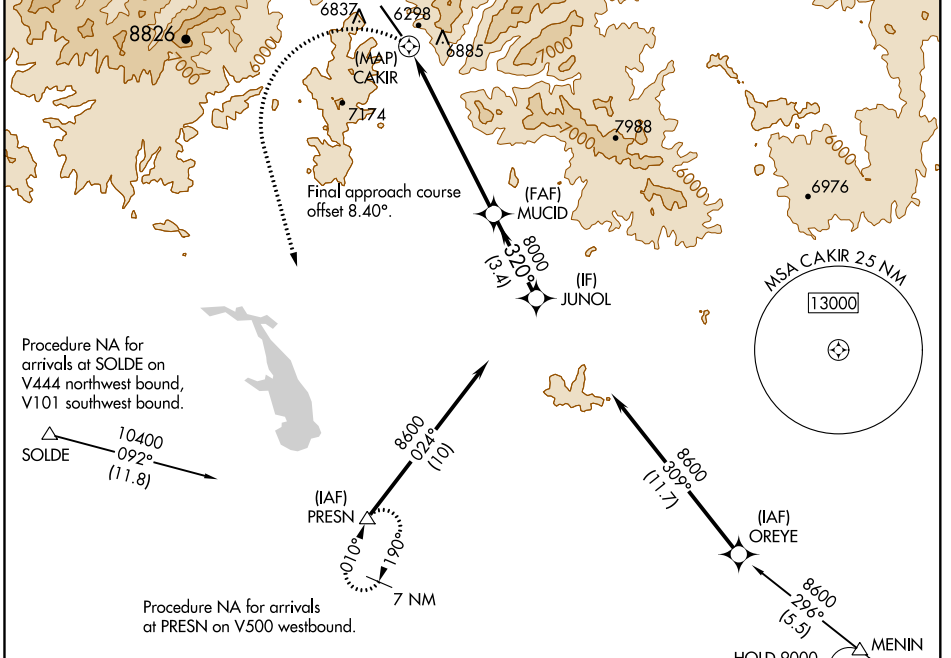
RNAV (GPS) Y RWY 31

FRIEDMAN MEML (SUN)

⚠ Circling NA northeast of Rwy 13-31.
⚠ DME/DME RNP-0.3 NA. Rwy 31 helicopter visibility reduction below 1 SM NA.
⚠ -14°C

MISSED APPROACH: (Do not exceed 185 KIAS until PRESN) Climbing left turn to 8700 direct PRESN and hold. *Missed approach requires minimum climb of 410 feet per NM to 7600.

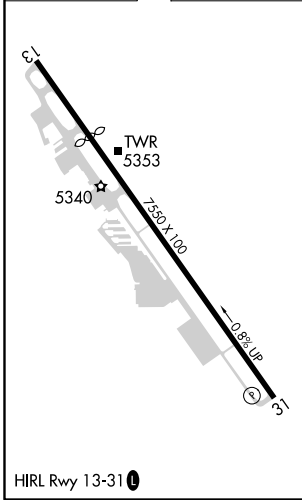
ATIS 128.225	SALT LAKE CENTER 118.05 363.0	HAILEY TOWER* 125.6 (CTAF)	GND CON 121.7	UNICOM 122.95
------------------------	---	--------------------------------------	-------------------------	-------------------------



NW-1, 15 JUL 2021 to 12 AUG 2021

NW-1, 15 JUL 2021 to 12 AUG 2021

ELEV 5320	D	TDZE 5289
-----------	----------	-----------



HAILEY, IDAHO
Orig 21JUL16

NoPT for arrivals at MENIN on V500 westbound, V231 northbound.

8700	PRESN	MUCID	JUNOL	
	△			
	CAKIR	8000	8600	
0.5 NM		6.7 NM	3.4 NM	
CATEGORY	A	B	C	D
LP MDA*	6900-1¼ 1611 (1600-1¼)	6900-1½ 1611 (1600-1½)	6900-3	1611 (1600-3)
LP MDA	7220-1¼ 1931 (1900-1¼)	7220-1½ 1931 (1900-1½)	7220-3	1931 (1900-3)
LNAV MDA*	7100-1¼ 1811 (1800-1¼)	7100-1½ 1811 (1800-1½)	7100-3	1811 (1800-3)
LNAV MDA	7340-1¼ 2051 (2100-1¼)	7340-1½ 2051 (2100-1½)	7340-3	2051 (2100-3)
C CIRCLING	7340-1¼ 2020 (2100-1¼)	7360-1½ 2040 (2100-1½)	7580-3 2260 (2300-3)	7940-3 2620 (2700-3)

RNAV (GPS) Y RWY 31

FRIEDMAN MEML (SUN)