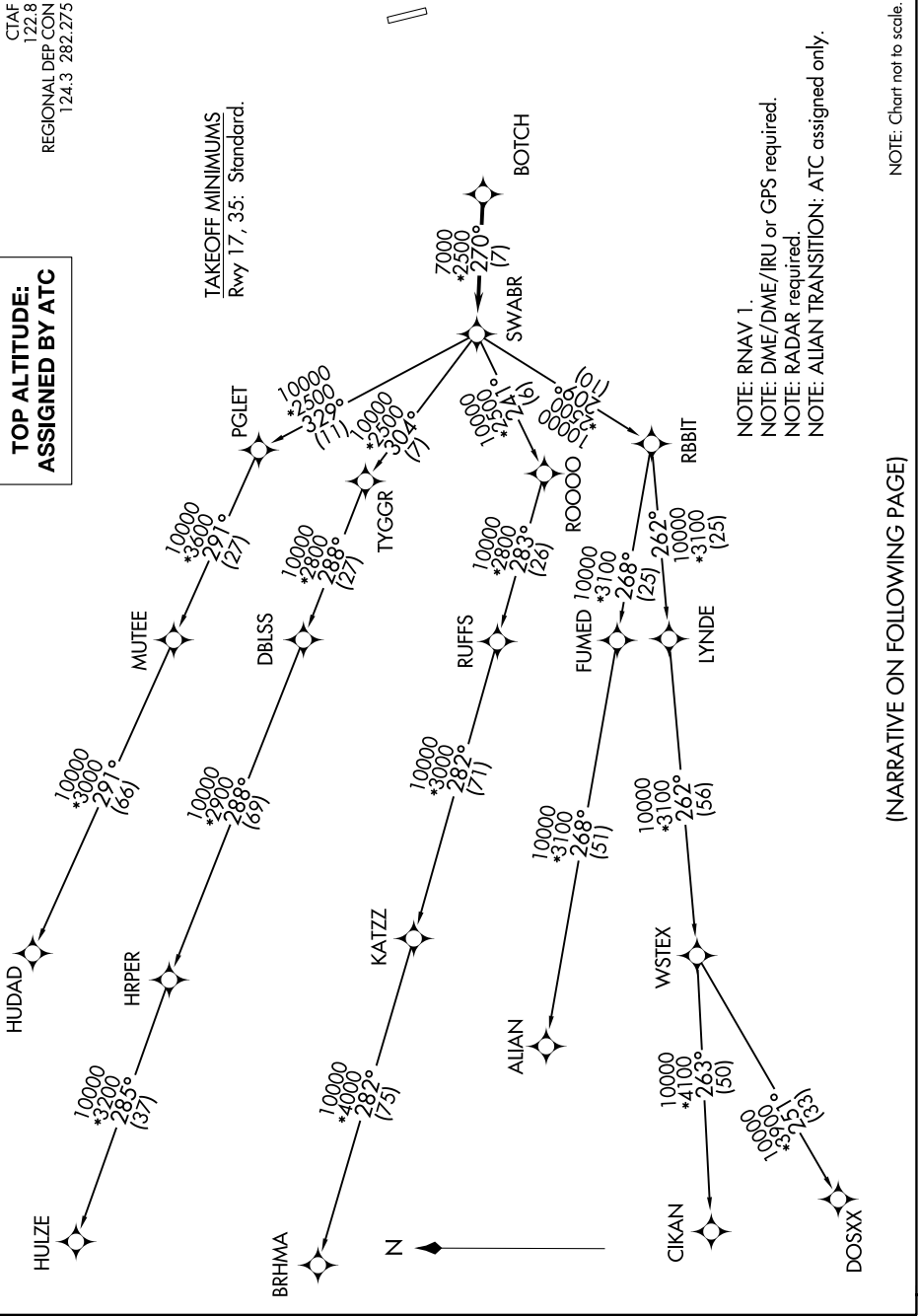


# SWABR EIGHT DEPARTURE (RNAV)

CTAF  
122.8  
REGIONAL DEP CON  
124.3 282.275

## TOP ALTITUDE: ASSIGNED BY ATC

TAKEOFF MINIMUMS  
Rwy 17, 35: Standard.



NOTE: RNAV 1.  
 NOTE: DME/DME/IRU or GPS required.  
 NOTE: RADAR required.  
 NOTE: ALIAN TRANSITION: ATC assigned only.

NOTE: Chart not to scale.

(NARRATIVE ON FOLLOWING PAGE)