

WAAS CH <b>86728</b> <b>W18A</b>	APP CRS <b>178°</b>	Rwy Idg TDZE Apt Elev	<b>3204</b> <b>255</b> <b>256</b>
--	------------------------	-----------------------------	---

# RNAV (GPS) RWY 18

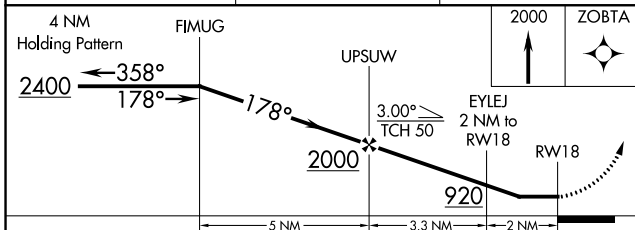
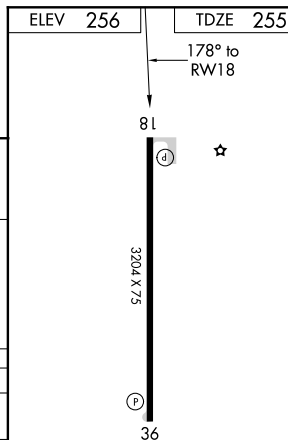
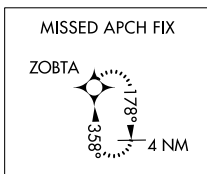
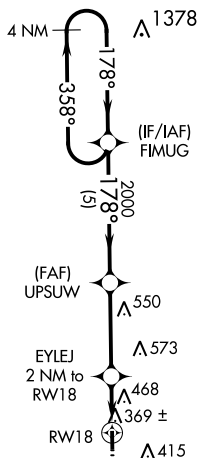
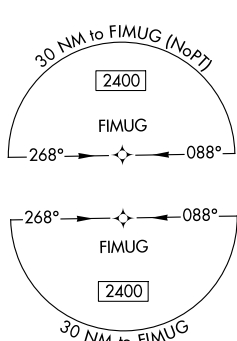
JONESBORO (F88)

**NA** Procedure NA at night, DME/DME RNP-0.3 NA. Visibility reduction by helicopters NA. Obtain local altimeter setting on CTAF; when not received, use Ruston altimeter setting and increase all MDA 60 feet, and LP Cat C visibility ¼ mile and LNAV Cat C visibility ½ mile.

**MISSED APPROACH:** Climb to 2000 direct ZOBTA and hold.

MONROE APP CON ★  
**126.9 307.9**

(CTAF)  
**122.9**



CATEGORY	A	B	C	D
LP MDA	620-1	365 (400-1)		NA
LNAV MDA	720-1	465 (500-1)	720-1⅓ 465 (500-1⅓)	NA
CIRCLING	780-1	524 (600-1)	780-1½ 524 (600-1½)	NA

REIL Rwy 18 and 36  
MIRL Rwy 18-36

SC-4, 15 JUL 2021 to 12 AUG 2021

SC-4, 15 JUL 2021 to 12 AUG 2021