

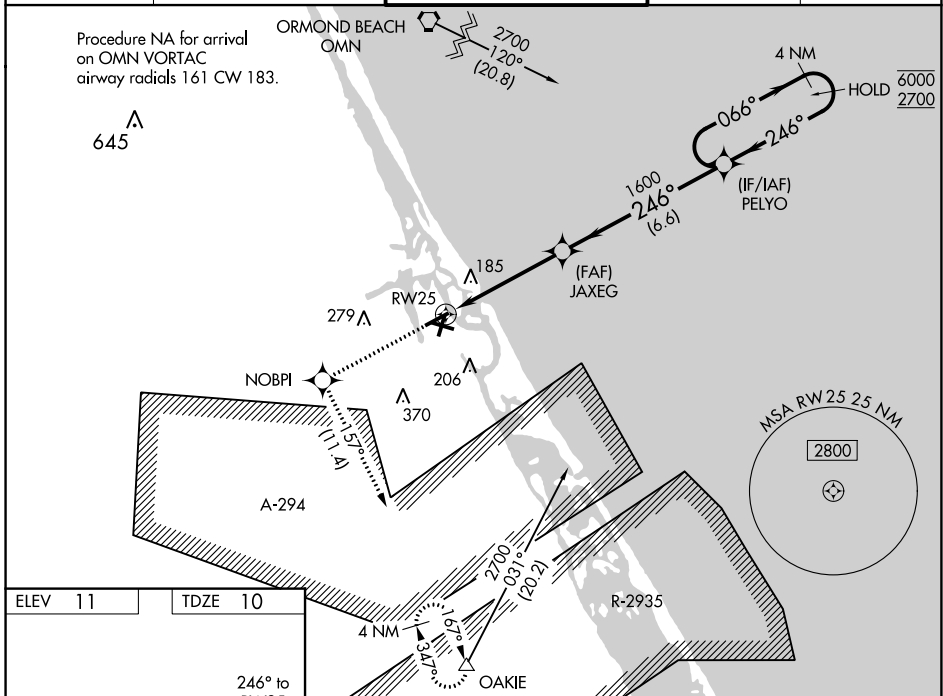
WAAS CH 50500 W25A	APP CRS 246°	Rwy Idg TDZE 10 Apt Elev 11	4700
--	------------------------	---	-------------

RNAV (GPS) RWY 25

NEW SMYRNA BEACH MUNI (EVB)

RNP APCH.	<p>▼ Rwy 25 helicopter visibility reduction below 1 SM NA. Straight-In Rwy 25 NA at night. Circling Rwy 11, 25 NA at night. When local altimeter setting not received, use Daytona Beach altimeter setting increase LPV DA to 328 feet and all MDA 40 feet. Increase LNAV Cat C visibility 1/2 SM and Circling Cat C visibility 1/4 SM.</p>	<p>MISSED APPROACH: Climb to 4000 direct NOBPI and on track 157° to OAKIE and hold, continue climb-in-hold to 4000.</p>
-----------	--	---

ATIS 124.625	DAYTONA APP CON 125.35 322.3	NEW SMYRNA TOWER ★ 119.675 (CTAF) 0	GND CON 121.325	UNICOM 122.95
------------------------	--	---	---------------------------	-------------------------



ELEV 11	TDZE 10	4000 NOBPI	tr 157°	OAKIE	VGSI and RNAV glidepath not coincident (VGSI Angle 3.00/TCH 46).	4 NM Holding Pattern
		PELYO	066° → 6000	← 246° 2700	GP 3.00° TCH 60	
		JAXEG 1600	246°	1600		
		RW25	4.7 NM	6.6 NM		

CATEGORY	A	B	C	D
LPV DA	303-1 293 (300-1)			NA
LNAV MDA	440-1	430 (500-1)	440-1 1/4 430 (500-1 1/4)	NA
C CIRCLING	440-1 429 (500-1)	520-1 509 (600-1)	680-1 3/4 669 (700-1 3/4)	NA

SE-3, 15 JUL 2021 to 12 AUG 2021

SE-3, 15 JUL 2021 to 12 AUG 2021