

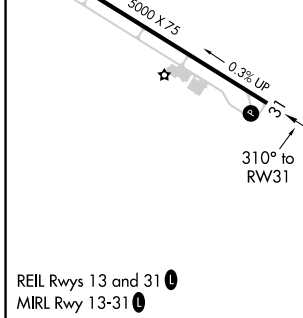
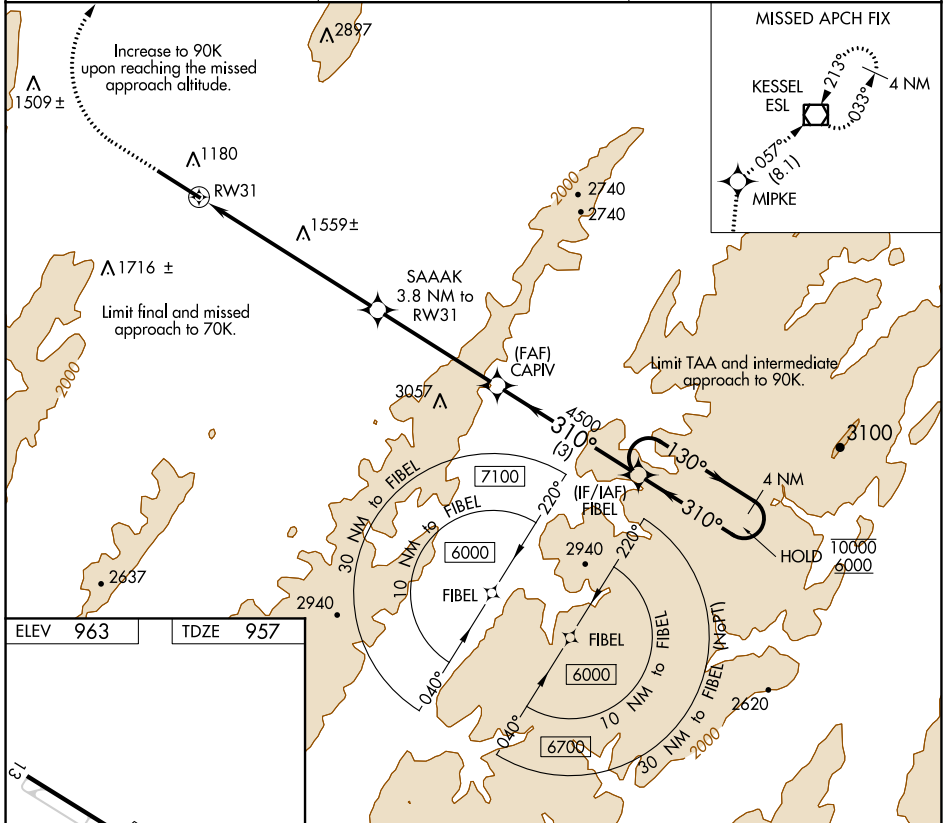
COPTER RNAV (GPS) X RWY 31

GRANT COUNTY (W99)

APP CRS 310°	Rwy Idg 5000
	TDZE 957
	Apt Elev 963

RNP APCH.	MISSED APPROACH: Climb to 1380 then climbing right turn to 5000 direct MIPKE and on track 057° to ESL VOR/DME and hold.
<p>▲ NA When local altimeter setting not received, procedure NA.</p> <p>❄️ -8°C</p>	

AWOS-3 124.475	WASHINGTON CENTER 133.65 285.6	UNICOM 122.8 (CTAF) 📻
--------------------------	--	---------------------------------



ELEV 963	TDZE 957	1380 5000		MIPKE	tr 057°	ESL	VGSI and descent angles not coincident (VGSI Angle 6.50/TCH 46).
		1.3 NM to RWY 31		SAAAK 3.8 NM to RWY 31	CAPIV	FIBEL Holding Pattern	4 NM
		310° to RWY 31		1.3 NM to RWY 31	3.8 NM to RWY 31	5.20° to HCH 46	10000 6000
		310°		3080*	4500	130°	310°
		1.3 NM		2.5 NM	2.5 NM	3 NM	
CATEGORY		COPTER					
LNAV MDA		1880-3/4 923 (1000-3/4)					

NE-4, 15 JUL 2021 to 12 AUG 2021

NE-4, 15 JUL 2021 to 12 AUG 2021

COPTER RNAV (GPS) X RWY 31