

APP CRS	Rwy Idg	N/A
145°	TDZE	N/A
	Apt Elev	963

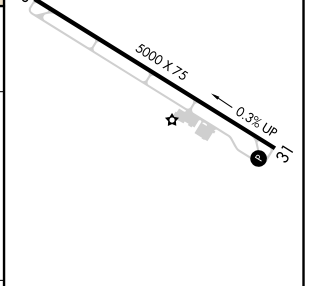
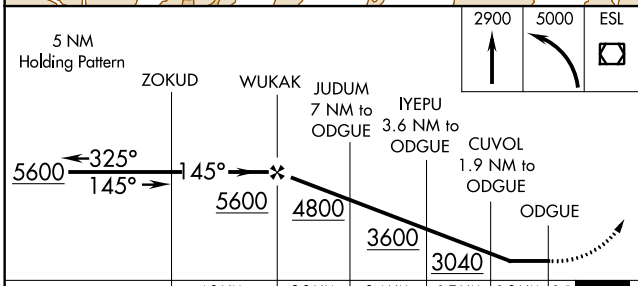
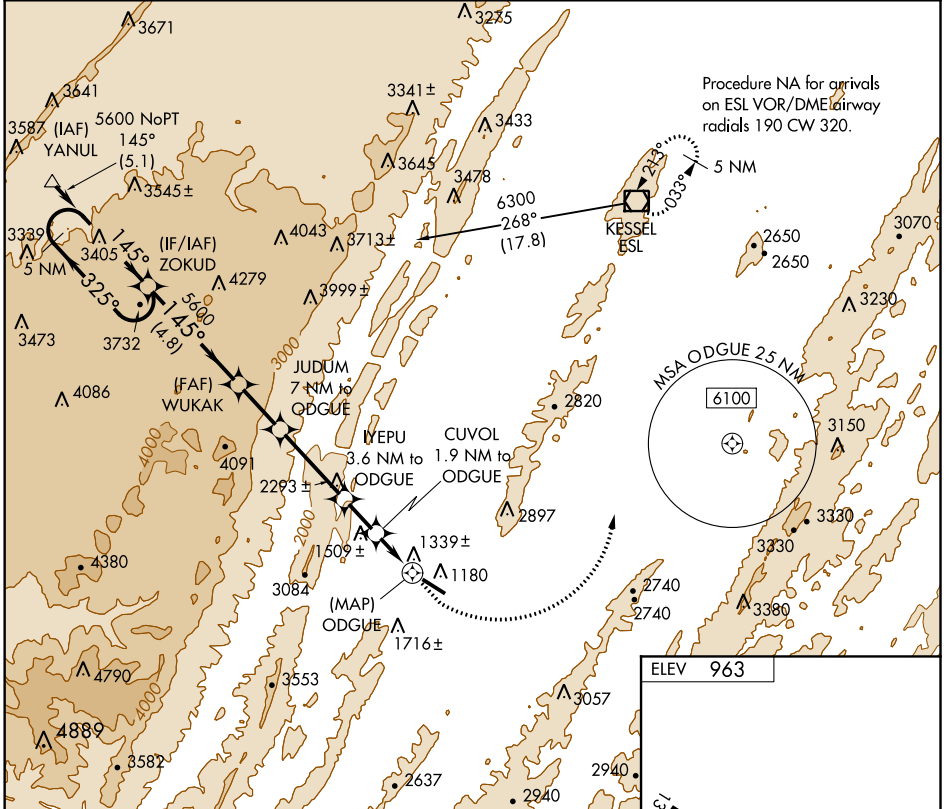
RNAV (GPS)-C

GRANT COUNTY (W99)

Procedure NA at night. DME/DME RNP-0.3 NA. Helicopter visibility reduction below 1 SM NA.

MISSED APPROACH: Climb to 2900 then climbing left turn to 5000 direct ESL VOR/DME and hold.

AWOS-3 124.475	WASHINGTON CENTER 133.65 285.6	UNICOM 122.8 (CTAF)
--------------------------	--	-------------------------------



CATEGORY	A	B	C	D
CIRCLING	2400-1¼ 1437 (1500-1¼)	2400-1½ 1437 (1500-1½)	2880-3 1917 (2000-3)	NA

MIRL Rwy 13-31

REIL Rwys 13 and 31

NE-4, 15 JUL 2021 to 12 AUG 2021

NE-4, 15 JUL 2021 to 12 AUG 2021