

WAAS CH <b>50543</b> <b>W31B</b>	APP CRS <b>295°</b>	Rwy Idg TDZE Apt Elev	<b>5000</b> <b>957</b> <b>963</b>
--	------------------------	-----------------------------	---

# RNAV (GPS) Z RWY 31

GRANT COUNTY (W99)

RNP APCH.

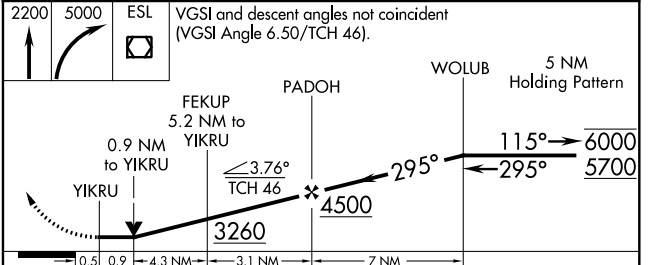
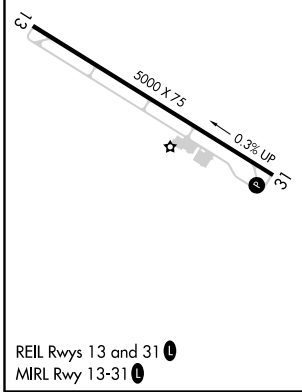
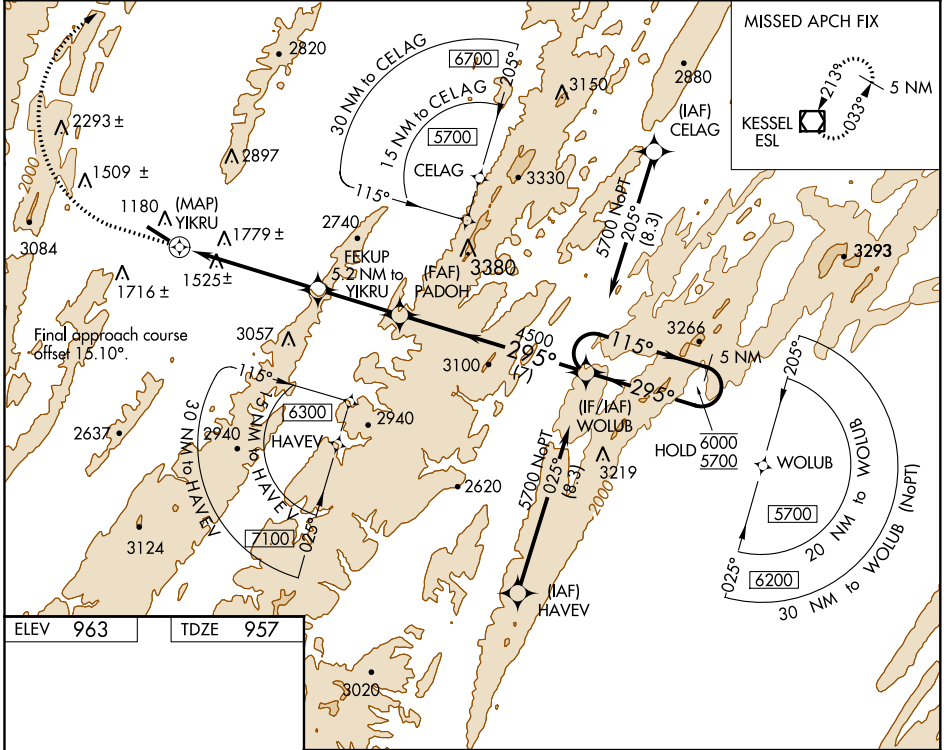
**V** NA Rwy 31 helicopter visibility reduction below 3/4 SM NA. When local altimeter setting not received, procedure NA.

**8** -8°C

MISSED APPROACH: Climb to 2200 then climbing right turn to 5000 direct ESL VOR/DME and hold.

\*Missed approach requires minimum climb of 410 feet per NM to 3300, if unable to meet climb gradient, see RNAV (GPS) Y Rwy 31.

AWOS-3 <b>124.475</b>	WASHINGTON CENTER <b>133.65 285.6</b>	UNICOM <b>122.8 (CTAF)</b> <b>0</b>
--------------------------	--	--



CATEGORY	A	B	C	D
*LP MDA	1980-1 1/4 1023 (1100-114)	1980-1 1/2 1023 (1100-112)	1980-3 1023 (1100-3)	NA
*LNAV MDA	2120-1 1/4 1163 (1200-114)	2120-1 1/2 1163 (1200-112)	2120-3 1163 (1200-3)	NA

NE-4, 15 JUL 2021 to 12 AUG 2021

NE-4, 15 JUL 2021 to 12 AUG 2021