

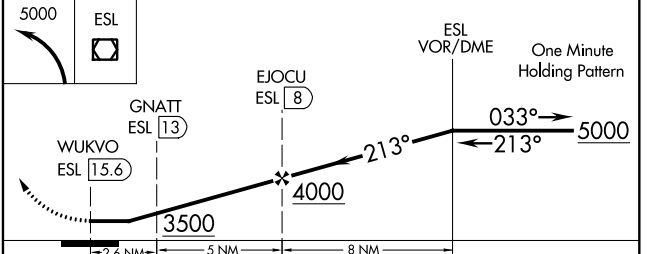
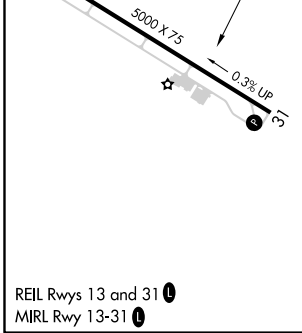
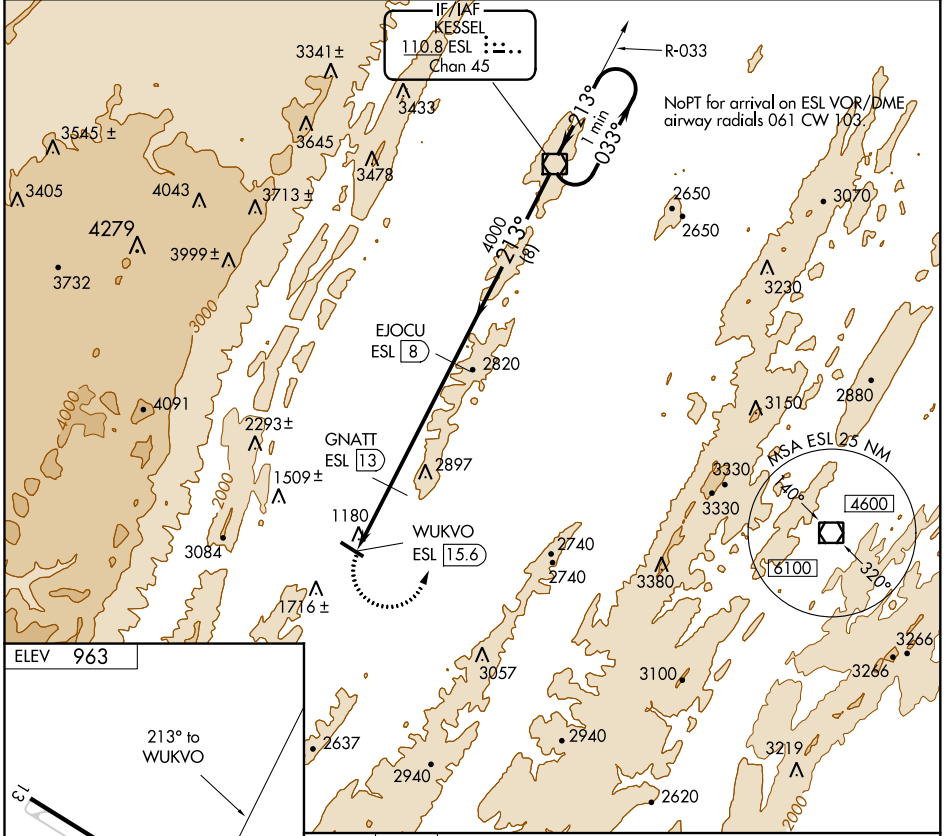
VOR/DME ESL 110.8 Chan 45	APP CRS 213°	Rwy Idg TDZE Apt Elev 963	N/A N/A 963
---	------------------------	---	--

VOR/DME-A

GRANT COUNTY (W99)

MISSSED APPROACH: Climbing left turn to 5000 direct ESL VOR/DME and hold.

AWOS-3 124.475	WASHINGTON CENTER 133.65 285.6	UNICOM 122.8 (CTAF)
--------------------------	--	-------------------------------



CATEGORY	A	B	C	D
C CIRCLING	3100-1¼ 2137 (2200-1¼)	3100-1½ 2137 (2200-1½)	3100-3 2137 (2200-3)	NA

NE-4, 15 JUL 2021 to 12 AUG 2021

NE-4, 15 JUL 2021 to 12 AUG 2021