

WAAS CH <b>50139</b> <b>W34A</b>	APP CRS <b>337°</b>	Rwy Idg TDZE <b>769</b> Apt Elev <b>774</b>	<b>5001</b> <b>769</b> <b>774</b>
--	------------------------	---	---

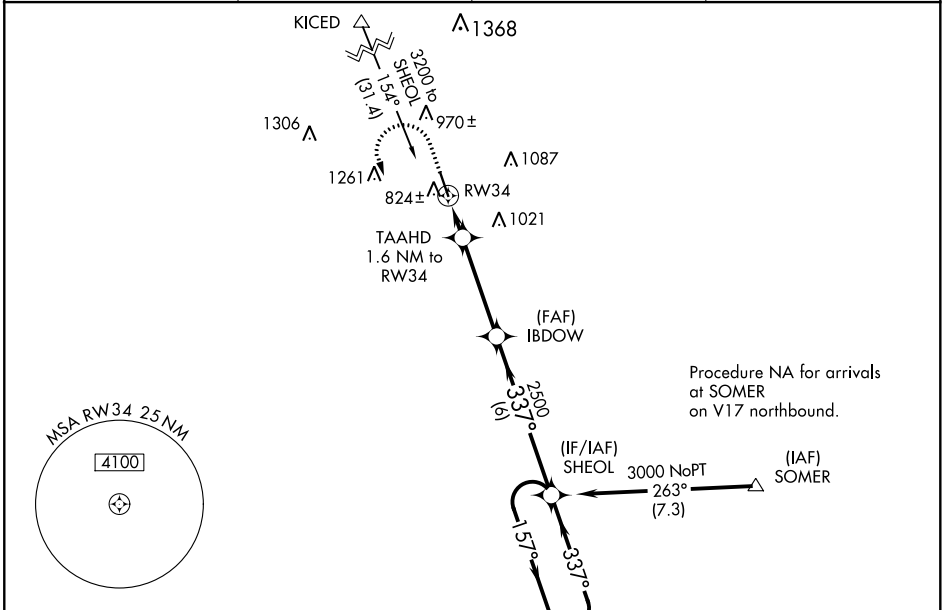
# RNAV (GPS) RWY 34

CASTROVILLE MUNI (CVB)

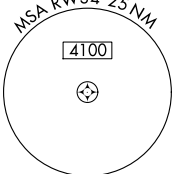
For uncompensated Baro-VNAV systems, LNAV/VNAV NA below -15°C (5°F) or above 54°C (130°F). DME/DME RNP-0.3 NA. When local altimeter setting not received, use Lackland AFB (Kelly Fld Annex) altimeter setting: increase all DA/MDA 60 feet and all visibilities ¼ mile. Helicopter visibility reduction below ¼ SM NA. Night landing: Rwy 16 NA.

MISSED APPROACH: Climb to 1300 then climbing left turn to 3000 direct SHEOL and hold.

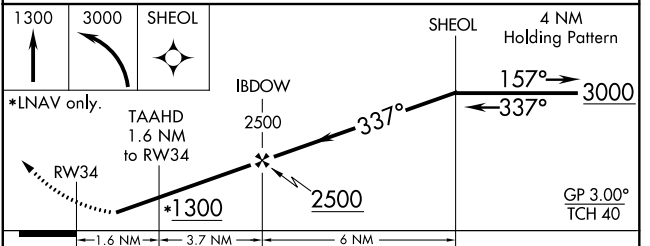
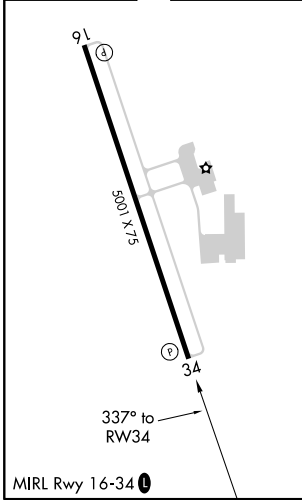
AWOS-3 <b>119.25</b>	HDO ASOS <b>119.675</b>	SAN ANTONIO APP CON <b>118.05 353.5</b>	UNICOM <b>122.8 (CTAF) 0</b>
-------------------------	----------------------------	--	---------------------------------



Procedure NA for arrivals at SOMER on V17 northbound.



ELEV <b>774</b>	TDZE <b>769</b>
-----------------	-----------------



CATEGORY	A	B	C	D
LPV DA	1019-7/8	250 (300-7/8)		NA
LNAV/VNAV DA	1127-1 1/4	358 (400-1 1/4)		NA
LNAV MDA	1200-1	431 (500-1)	1200-1 1/8 431 (500-1 1/8)	NA
<b>C</b> CIRCLING	1200-1 426 (500-1)	1380-1 606 (700-1)	1580-2 1/4 806 (900-2 1/4)	NA

SC-3, 15 JUL 2021 to 12 AUG 2021

SC-3, 15 JUL 2021 to 12 AUG 2021