

WAAS CH <b>77622</b> W15A	APP CRS <b>148°</b>	Rwy Idg TDZE Apt Elev	<b>4000</b> <b>1061</b> <b>1062</b>
---------------------------------	------------------------	-----------------------------	---

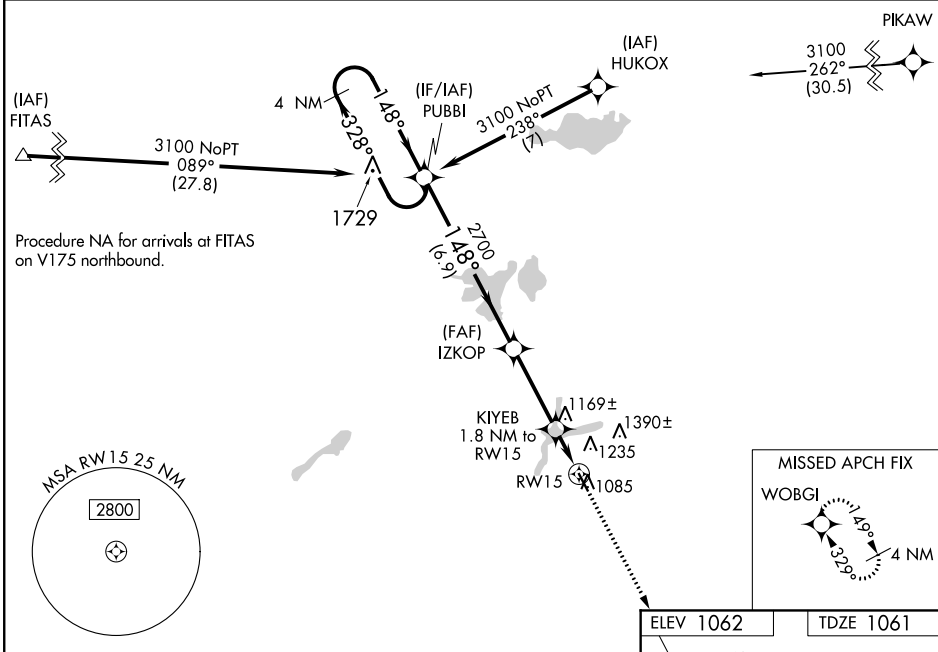
# RNAV (GPS) RWY 15

HUTCHINSON MUNI-BUTLER FIELD (HCD)

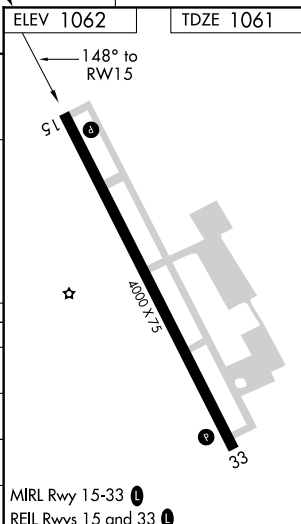
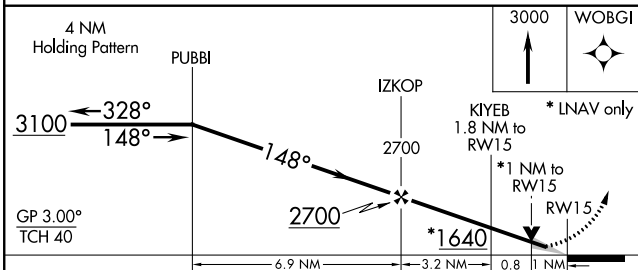
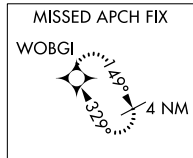
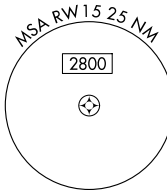
**⚠** Baro-VNAV NA when using Glencoe altimeter setting. For uncompensated Baro-VNAV systems, LNAV/VNAV NA below -17°C (2°F) or above 34°C (130°F). DME/DME RNP-0.3 NA. VDP NA with Glencoe altimeter setting. When local altimeter setting not received, use Glencoe altimeter setting and increase all DA 43 feet and LPV and LNAV/VNAV all Cats visibility 1/8 mile; increase all MDA 60 feet and LNAV Cat C visibility 1/4 mile.

MISSED APPROACH: Climb to 3000 direct WOBGI and hold.

AWOS-3 <b>118.525</b>	MINNEAPOLIS CENTER <b>127.1 290.2</b>	GCO <b>121.725</b>	UNICOM <b>122.8</b> (CTAF) <b>0</b>
--------------------------	--	-----------------------	--



Procedure NA for arrivals at FITAS on V175 northbound.



CATEGORY	A	B	C	D
LPV DA	1311-7/8	250 (300-7/8)		NA
LNAV/VNAV DA	1328-7/8	267 (300-7/8)		NA
LNAV MDA	1420-1	359 (400-1)		NA
CIRCLING	1540-1	478 (500-1)	1740-2 678 (700-2)	NA

MIRA Rwy 15-33 **0**  
REL Rwy 15 and 33 **0**