

WAAS CH <b>42815</b> <b>W28A</b>	APP CRS <b>284°</b>	Rwy Idg TDZE Apt Elev	<b>5000</b> <b>3165</b> <b>3167</b>
--	------------------------	-----------------------------	---

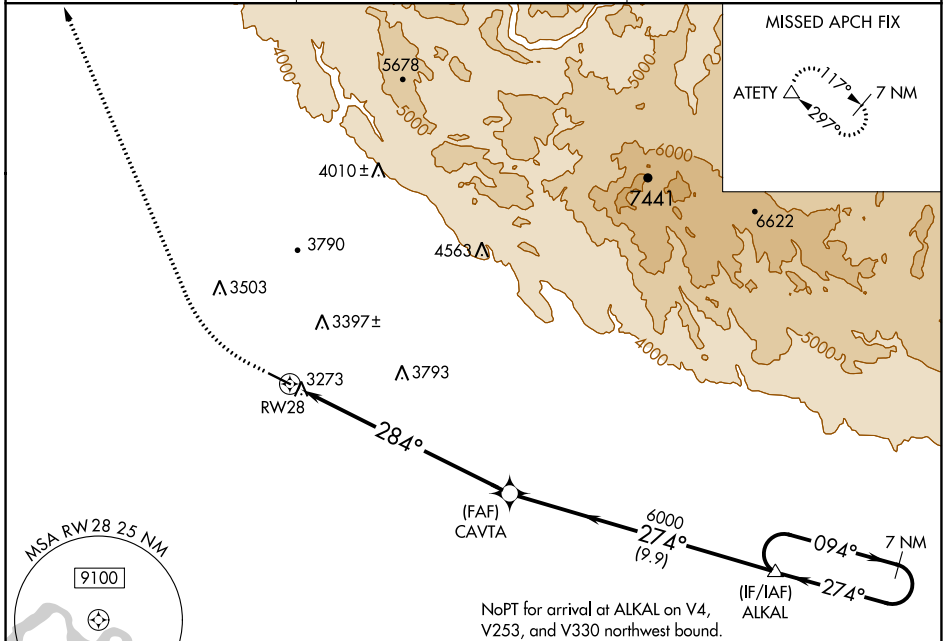
# RNAV (GPS) RWY 28

MOUNTAIN HOME MUNI (U76)

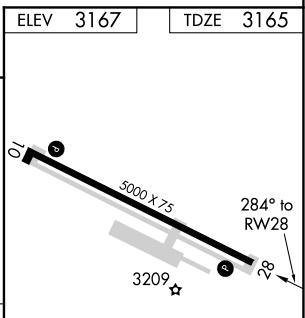
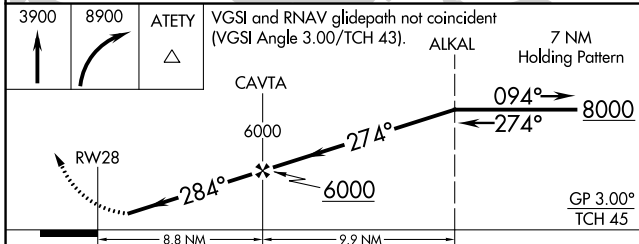
**NA** Use Mountain Home AFB altimeter setting, when not received, procedure NA. Baro-VNAV NA. Rwy 28 helicopter visibility reduction below 3/4 SM NA. DME/DME RNP-0.3 NA.

**MISSED APPROACH:** Climb to 3900 then climbing right turn 8900 direct ATETY and hold, continue climb-in-hold to 8900.

MUO AWOS <b>273.5</b>	MOUNTAIN HOME APP CON * <b>124.8 259.1</b>	AUNICOM <b>122.8 (CTAF)</b>
--------------------------	---	--------------------------------



ELEV 3167	TDZE 3165
-----------	-----------



CATEGORY	A	B	C	D
LPV DA	3458-1		293 (300-1)	
LNAV/VNAV DA	3524-1 1/4		359 (400-1 1/4)	
LNAV MDA	3900-1 735 (800-1)		3900-2 735 (800-2)	
<b>C</b> CIRCLING	3900-1 733 (800-1)		3900-2 733 (800-2)   4180-3 1013 (1100-3)	

REIL Rwy 10 and 28 **0**  
MIRL Rwy 10-28 **0**

NW-1, 15 JUL 2021 to 12 AUG 2021

NW-1, 15 JUL 2021 to 12 AUG 2021