

WAAS CH <b>78324</b> <b>W05A</b>	APP CRS <b>049°</b>	Rwy Idg TDZE Apt Elev	<b>3914</b> <b>2585</b> <b>2585</b>
--	------------------------	-----------------------------	---

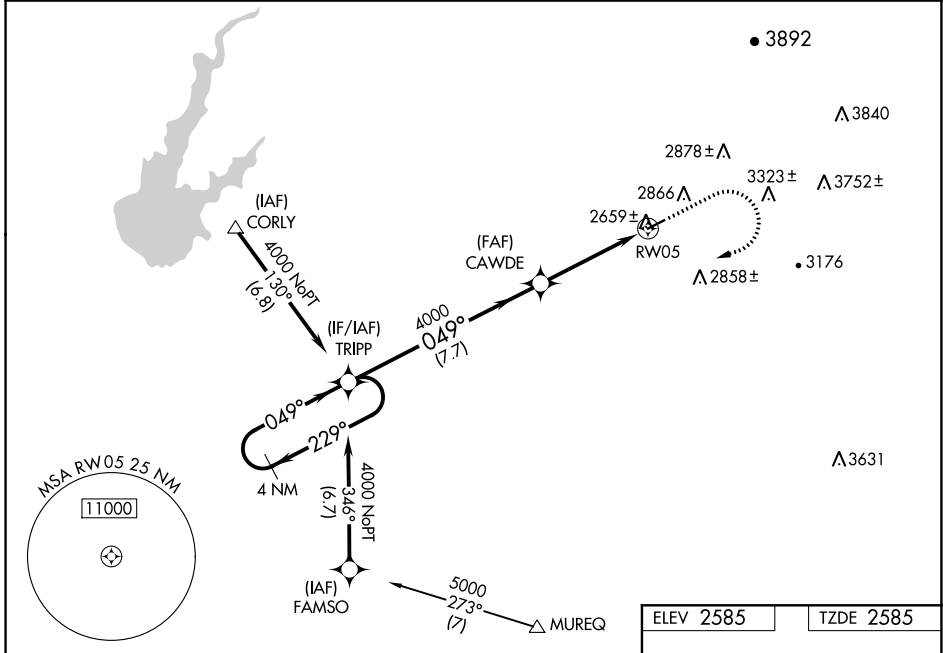
# RNAV (GPS) RWY 5

PLACERVILLE (PVF)

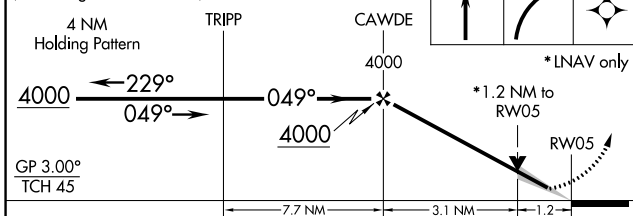
**⚠** Night landing: Rwy 23 NA. Baro-VNAV NA when using Auburn altimeter setting. For uncompensated Baro-VNAV systems, LNAV/VNAV NA below -20°C (-4°F) or above 54°C (130°F). Circling NA northwest of Rwy 5-23. DME/DME RNP-0.3 NA. VDP NA with Auburn altimeter setting. When local altimeter setting not received, use Auburn altimeter setting and increase all DA/MDA 200 feet, and all visibilities ¾ mile.

**⚠** MISSED APPROACH: Climb to 3050 then climbing right turn to 4500 direct TRIPP and hold.

AWOS-3 <b>128.125</b>	NORCAL APP CON <b>127.4 317.5</b>	UNICOM <b>122.8 (CTAF)</b>
--------------------------	--------------------------------------	-------------------------------



VGSI and RNAV glidepath not coincident (VGSI Angle 3.00/TCH 22).



CATEGORY	A	B	C	D
LPV DA	2835-¾	250 (300-¾)		NA
LNAV/VNAV DA	2874-1	289 (300-1)		NA
LNAV MDA	3040-1	455 (500-1)		NA
CIRCLING	3200-1 615 (700-1)	3260-1 675 (700-1)		NA

ELEV 2585	TZDE 2585
-----------	-----------

MIRL Rwy 5-23

SW-2, 15 JUL 2021 to 12 AUG 2021

SW-2, 15 JUL 2021 to 12 AUG 2021