

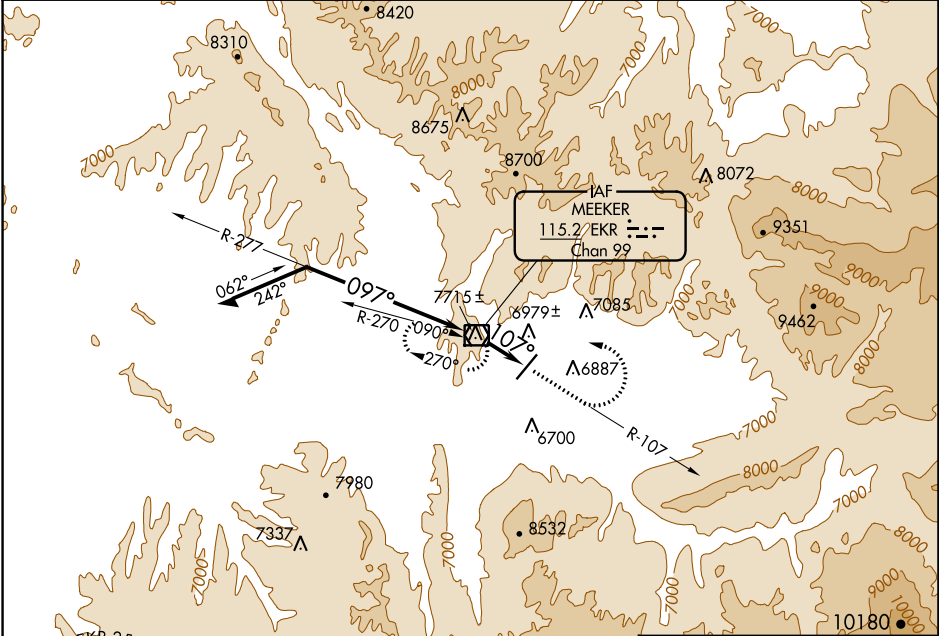
VOR/DME EKR <b>115.2</b> Chan <b>99</b>	APP CRS <b>107°</b>	Rwy Idg TDZE Apt Elev <b>N/A</b> <b>N/A</b> <b>6415</b>
---	------------------------	--

**VOR-A**  
MEEKER COULTER FLD (E/O)

**⚠** Circling not authorized west of Rwy 3-21.  
**⚠** NA Night landing: Rwy 21 NA.  
**⚠** -25°C Helicopter visibility reduction below 1 SM NA.

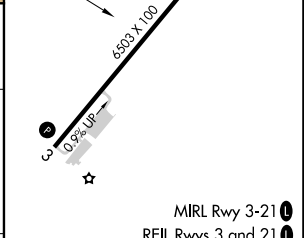
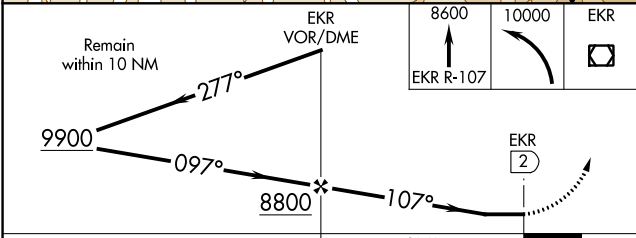
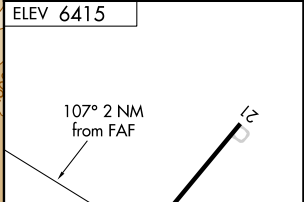
MISSED APPROACH: Climb via EKR VOR/DME R-107 to 8600, then climbing left turn to 10000 direct EKR VOR/DME and hold.

ASOS <b>135.525</b>	DENVER CENTER <b>134.5 327.8</b>	UNICOM <b>122.8 (CTAF) 0</b>
------------------------	-------------------------------------	---------------------------------



SW-1, 15 JUL 2021 to 12 AUG 2021

SW-1, 15 JUL 2021 to 12 AUG 2021



CATEGORY	A	B	C	D	FAF to MAP 2 NM					
CIRCLING	8000-1¼ 1585 (1600-1¼)	8000-1½ 1585 (1600-1½)	8440-3 2025 (2100-3)	NA	Knots	60	90	120	150	180
					Min:Sec	2:00	1:20	1:00	0:48	0:40