

APP CRS	Rwy Idg	N/A
122°	TDZE	N/A
	Apt Elev	1394

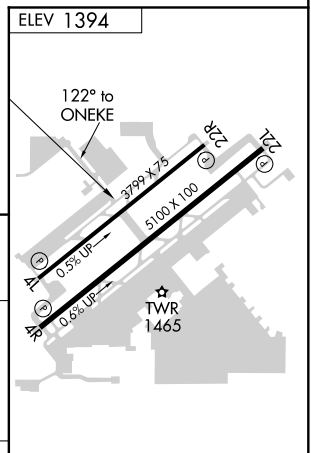
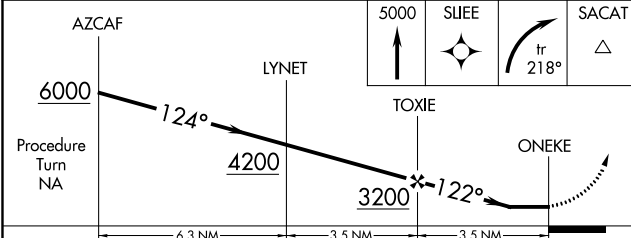
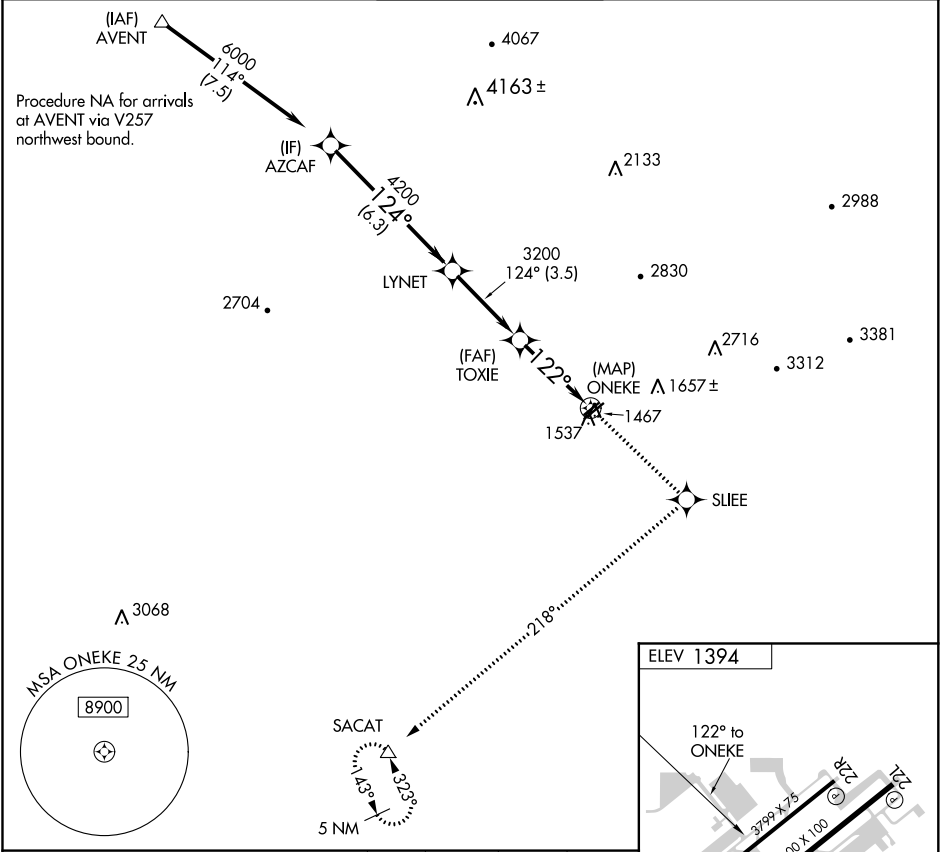
RNAV (GPS)-B

FALCON FLD (F'F'Z)

▽ DME/DME RNP- 0.3 NA.
▲ When local altimeter setting not received, use Phoenix Sky Harbor Intl altimeter setting and increase all MDA 80 feet.

MISSED APPROACH: Climb to 5000 direct SLIEE and right turn on track 218° to SACAT and hold, continue climb-in-hold to 5000.

ATIS 118.25	PHOENIX APP CON 120.7 239.0	FALCON TOWER * 124.6 (CTAF) 0	GND CON 121.3	UNICOM 122.95
-----------------------	---------------------------------------	---	-------------------------	-------------------------



CATEGORY	A	B	C	D
CIRCLING	1900-1	506 (600-1)	1900-1½ 506 (600-1½)	NA

REIL Rwy 4R, 4L and 22R
 MIRL Rwy 4R-22L **0**
 MIRL Rwy 4L-22R

SW-4, 15 JUL 2021 to 12 AUG 2021

SW-4, 15 JUL 2021 to 12 AUG 2021