

APP CRS <b>151°</b>	Rwy Idg <b>5100</b>
	TDZE <b>968</b>
	Apt Elev <b>968</b>

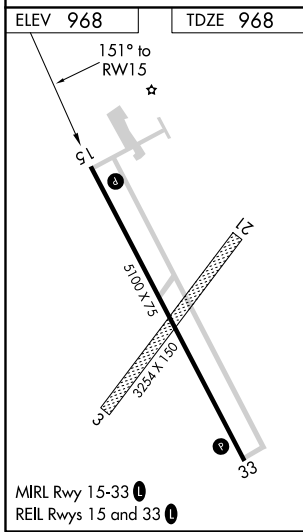
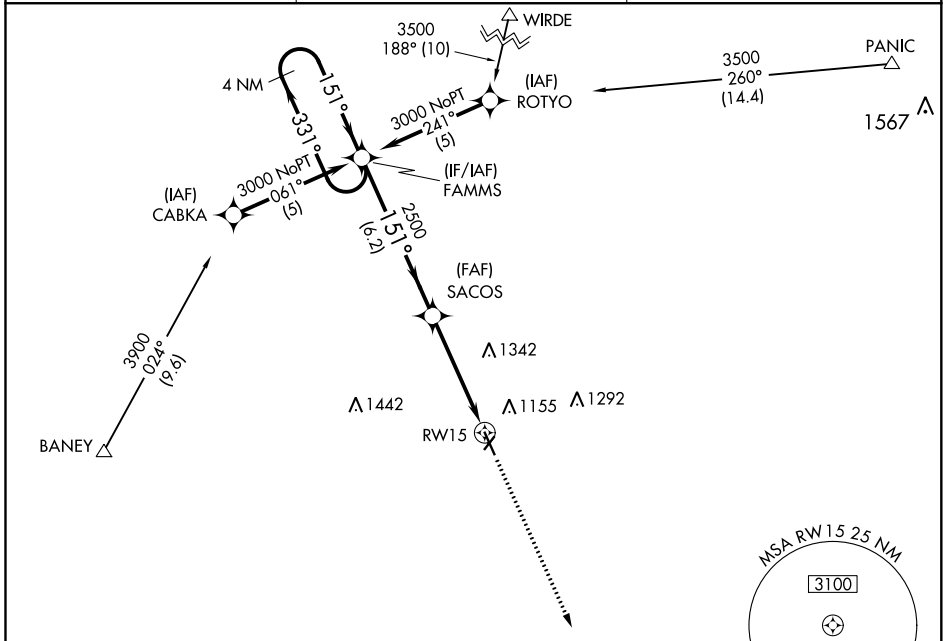
# RNAV (GPS) RWY 15

HARRY STERN (BWP)

**NA** DME/DME RNP-0.3 NA. Circling to Rwy 3/21 NA at night.  
 If local altimeter setting not received, use Fergus Falls, MN altimeter setting and increase all MDAs 80 feet.  
 VDP NA when using Fergus Falls, MN altimeter setting.

MISSED APPROACH: Climb to 3000 direct BEGGS and hold.

AWOS-3 <b>127.875</b>	MINNEAPOLIS CENTER <b>127.35 278.3</b>	UNICOM <b>123.0 (CTAF) 0</b>
--------------------------	---	---------------------------------



4 NM Holding Pattern 3000 331° 151° 151° 2500 3.04° TCH 55 6.2 NM 3 NM 1.6 NM 1.6 NM to RWY 15	FAMMS		3000	BEGGS
	VGSI and descent angles not coincident (VGSI Angle 3.00/TCH 42).			
CATEGORY	A	B	C	D
LNAV MDA	1500-1	532 (600-1)	1500-1½ 532 (600-1½)	1500-1¾ 532 (600-1¾)
CIRCLING	1520-1	552 (600-1)	1520-1½ 552 (600-1½)	1560-2 592 (600-2)

NC-1, 15 JUL 2021 to 12 AUG 2021

NC-1, 15 JUL 2021 to 12 AUG 2021