

WAAS CH 77930 W33A	APP CRS 331°	Rwy Idg 5100 TDZE 968 Apt Elev 968
--	------------------------	---

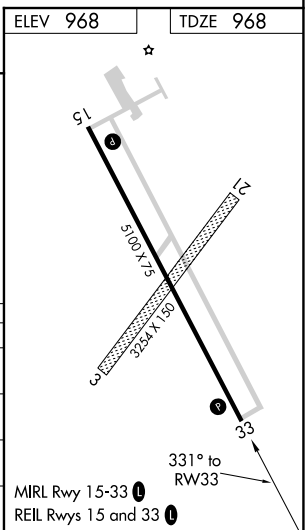
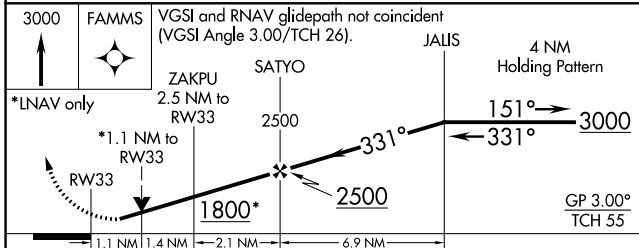
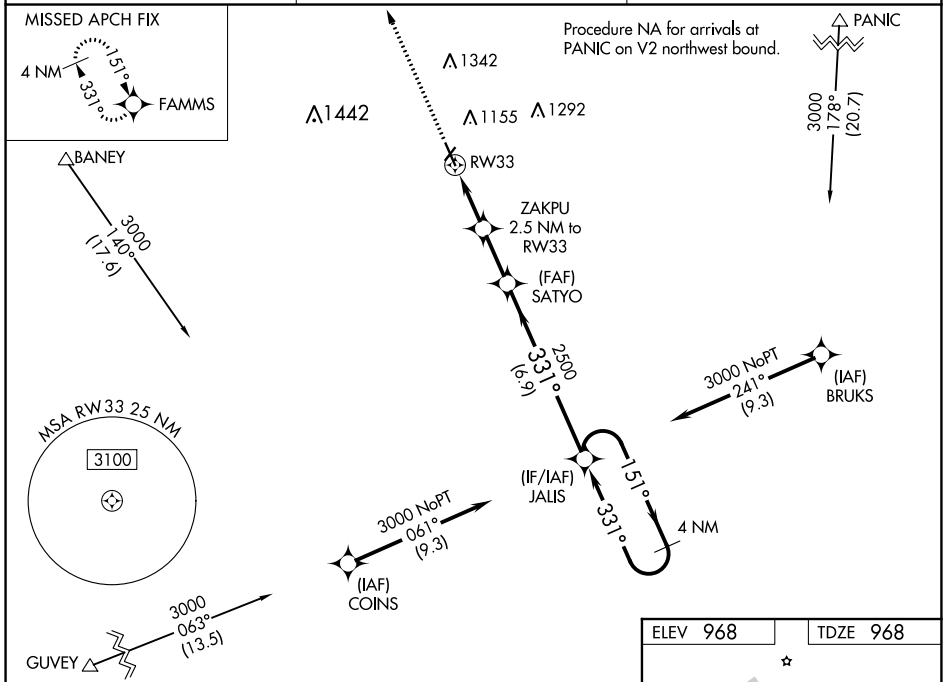
RNAV (GPS) RWY 33

HARRY STERN (BWP)

⚠ When VGSi inop, Circling Rwy 15 NA at night. For uncompensated Baro-VNAV systems, LNAV/VNAV NA below -16°C (4°F) or above 54°C (130°F). DME/DME RNP-0.3 NA. Visibility reduction by helicopters NA. When local altimeter setting not received, use Fergus Falls altimeter setting and increase all DA/MDA 80 feet and all visibility 3/8 mile. Baro-VNAV and VDP NA when using Fergus Falls altimeter setting.

MISSED APPROACH: Climb to 3000 direct FAMMS and hold.

AWOS-3 127.875	MINNEAPOLIS CENTER 127.35 278.3	UNICOM 123.0 (CTAF) ①
--------------------------	---	--



CATEGORY	A	B	C	D
LPV DA		1218-3/4	250 (300-3/4)	
LNAV/VNAV DA		1252-7/8	284 (300-7/8)	
LNAV MDA		1340-1	372 (400-1)	
CIRCLING	1520-1	552 (600-1)	1520-1 1/2 552 (600-1 1/2)	1560-2 592 (600-2)

NC-1, 15 JUL 2021 to 12 AUG 2021

NC-1, 15 JUL 2021 to 12 AUG 2021