

APP CRS	Rwy Idg	4864
172°	TDZE	1364
	Apt Elev	1364

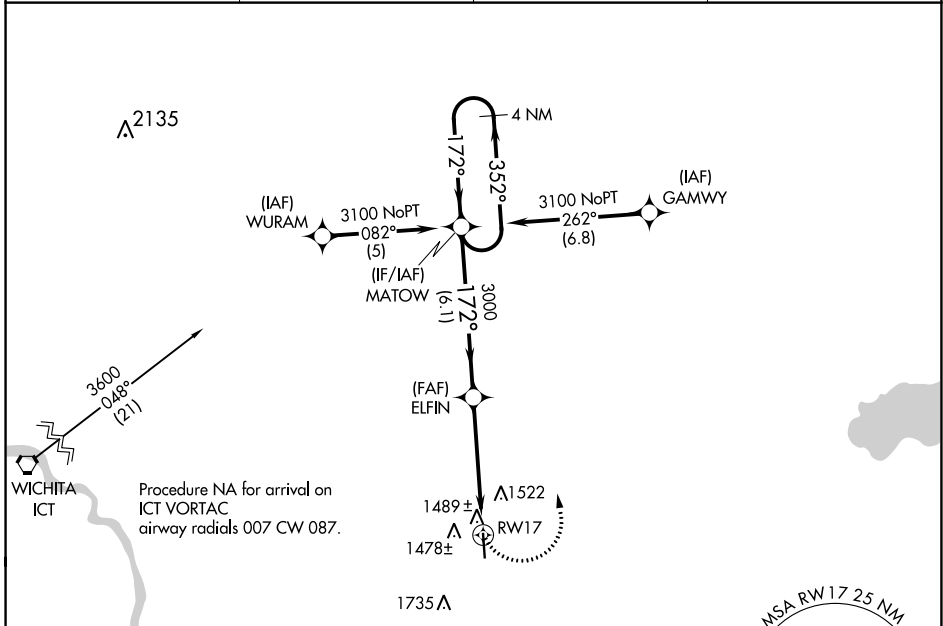
RNAV (GPS) RWY 17

LLOYD STEARMAN FLD (1K1)

⚠ DME/DME RNP-0.3 NA. When local altimeter setting not received, use Wichita Dwight D Eisenhower Nil altimeter setting. Straight-in Rwy 17 NA at night, Circling Rwy 17 NA at night. Rwy 17 helicopter visibility reduction below 1 SM NA.

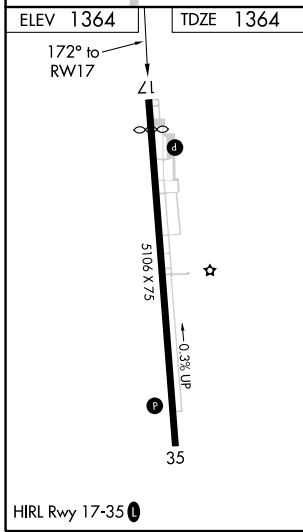
⚠ NA MISSED APPROACH: Climbing left turn to 3100 direct MATOW and hold.

AWOS-3 118.3	WICHITA APP CON 134.8 269.1	CLNC DEL 125.0	UNICOM 123.075 (CTAF) 0
------------------------	---------------------------------------	--------------------------	-----------------------------------



NC-2, 15 JUL 2021 to 12 AUG 2021

NC-2, 15 JUL 2021 to 12 AUG 2021



ELEV 1364	TDZE 1364			
<p>4 NM Holding Pattern</p> <p>VGSI and descent angles not coincident (VGSI Angle 3.00/TCH 33).</p> <p>3100 MATOW</p> <p>ELFIN</p> <p>3000</p> <p>3.04° TCH 35</p> <p>RWY 17</p> <p>6.1 NM 5 NM</p>				
CATEGORY	A	B	C	D
LNAV MDA	1820-1	456 (500-1)	1820-1 $\frac{3}{8}$ 456 (500-1 $\frac{3}{8}$)	NA
CIRCLING	1920-1	556 (600-1)	1920-1 $\frac{1}{2}$ 556 (600-1 $\frac{1}{2}$)	NA