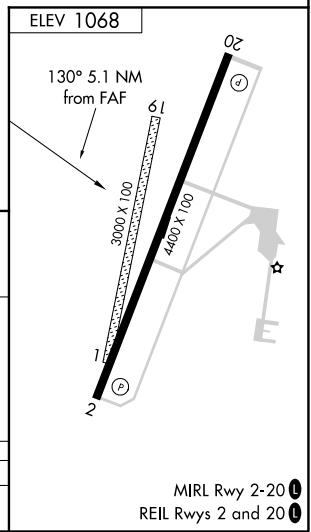
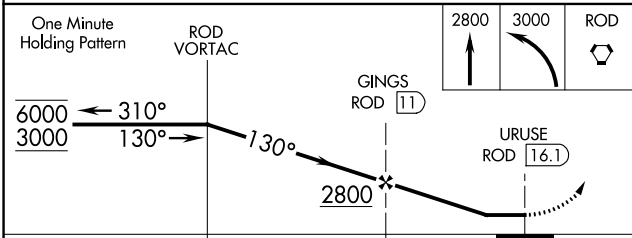
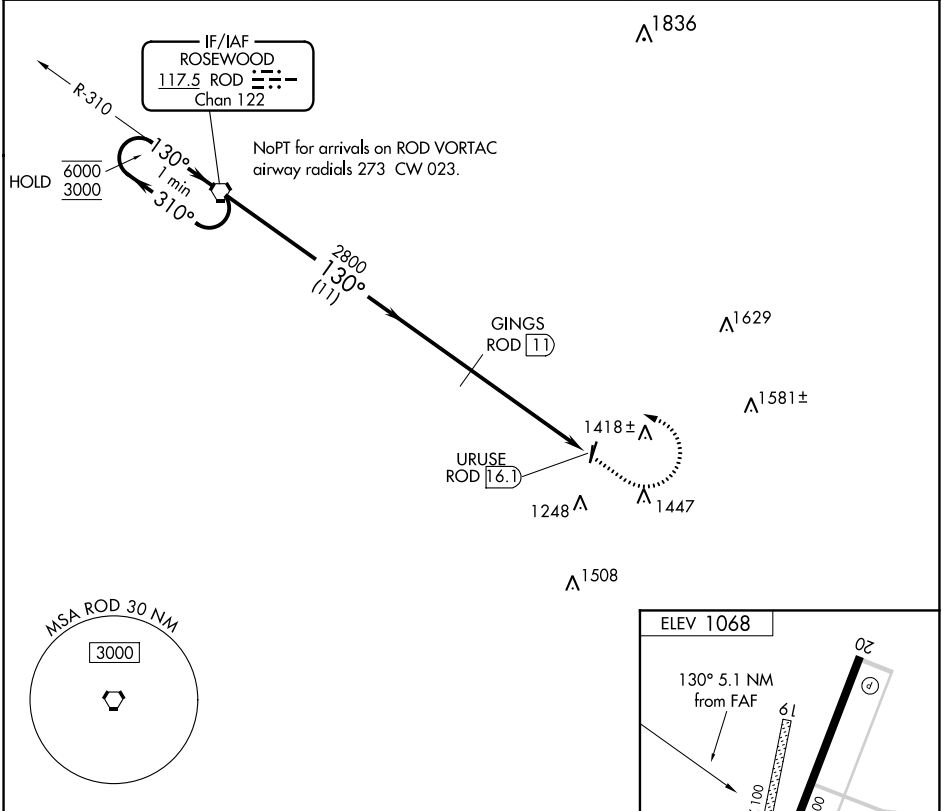


VORTAC ROD <b>117.5</b> Chan <b>122</b>	APP CRS <b>130°</b>	Rwy Idg TDZE Apt Elev <b>N/A</b> <b>N/A</b> <b>1068</b>
---	------------------------	--

**VOR-A**  
GRIMES FIELD (I74)

DME required.		MISSED APPROACH: Climb to 2800 then climbing left turn to 3000 direct ROD VORTAC and hold.
<p>▼ Circling NA to Rwy 1 and 19. When local altimeter setting not received, use Springfield altimeter setting and increase all MDAs 60 feet and Cat C visibility ¼ SM.</p> <p>▲</p>		
AWOS-3 <b>118,325</b>	COLUMBUS APP CON <b>118.425 294.5</b>	UNICOM <b>122.7 (CTAF)</b>



CATEGORY	A	B	C	D
CIRCLING	1580-1 512 (600-1)	1780-1 712 (800-1)	1800-2 732 (800-2)	NA

EC-2, 15 JUL 2021 to 12 AUG 2021

EC-2, 15 JUL 2021 to 12 AUG 2021