

NDB HHH <b>359</b>	APP CRS <b>356°</b>	Rwy Idg TDZE Apt Elev	<b>3399</b> <b>703</b> <b>703</b>
-----------------------	------------------------	-----------------------------	---

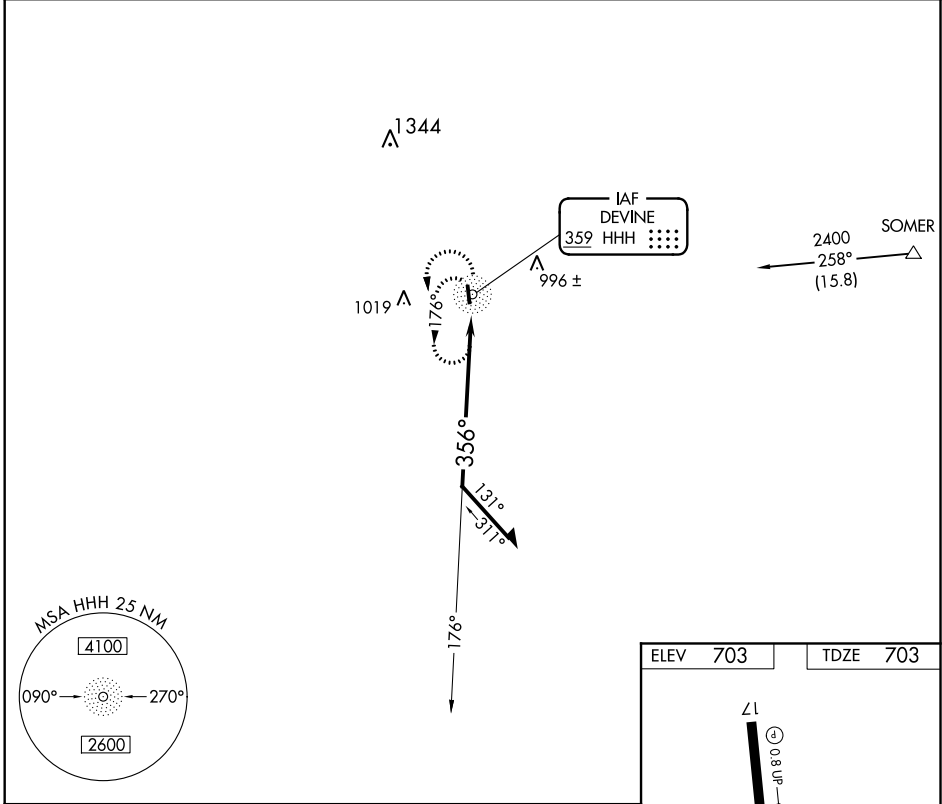
# NDB RWY 35

DEVINE MUNI (23R)

**▼** Use Castroville Muni altimeter setting; when not received, use South Texas Rgnl at Hondo altimeter setting and increase all MDA 40 feet. Helicopter visibility reduction below 1 SM NA. Night landing: Rwy 35 NA.

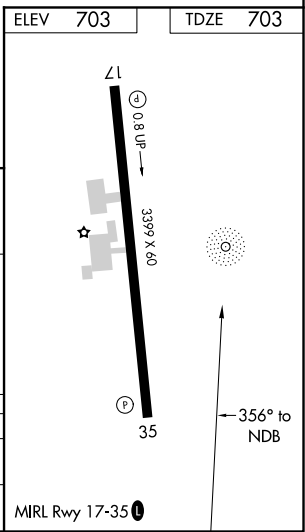
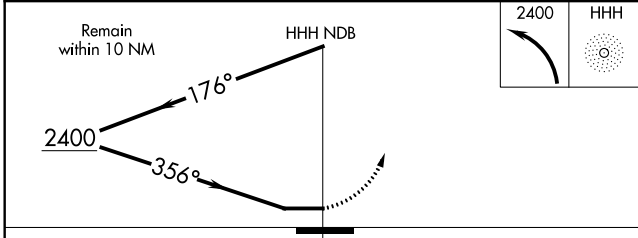
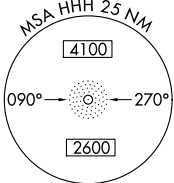
**▲ NA** MISSED APPROACH: Climbing left turn to 2400 in HHH NDB holding pattern.

CVB AWOS-3 <b>119.25</b>	HOUSTON CENTER <b>134.95 269.4</b>	CTAF <b>122.9</b>
-----------------------------	---------------------------------------	----------------------



SC-3, 15 JUL 2021 to 12 AUG 2021

SC-3, 15 JUL 2021 to 12 AUG 2021



CATEGORY	A	B	C	D
S-35	1340-1	637 (700-1)		NA
CIRCLING	1380-1	677 (700-1)		NA