

APP CRS <b>346°</b>	Rwy Idg <b>3399</b>
	TDZE <b>702</b>
	Apt Elev <b>702</b>

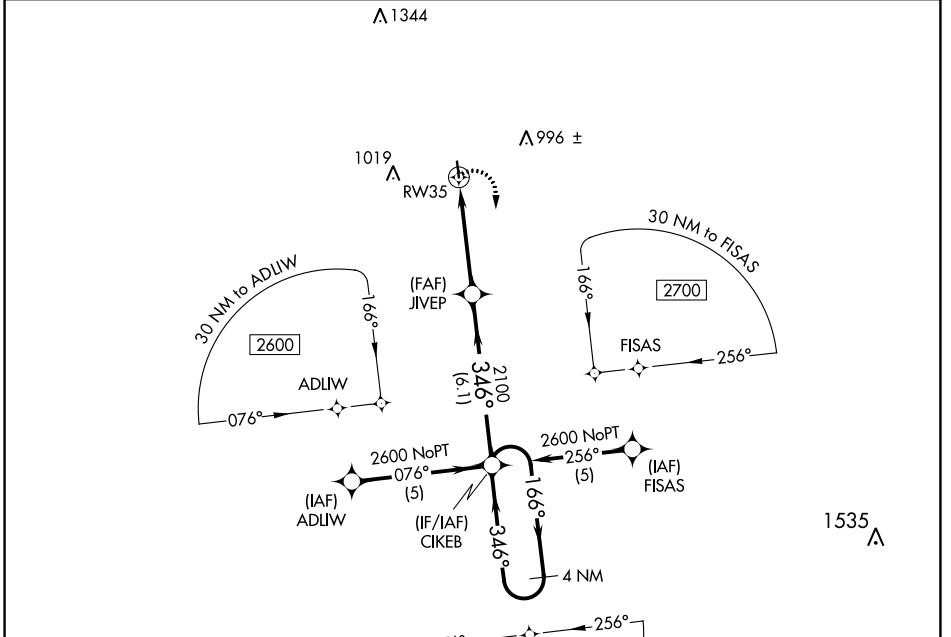
# RNAV (GPS) RWY 35

DEVINE MUNI (23R)

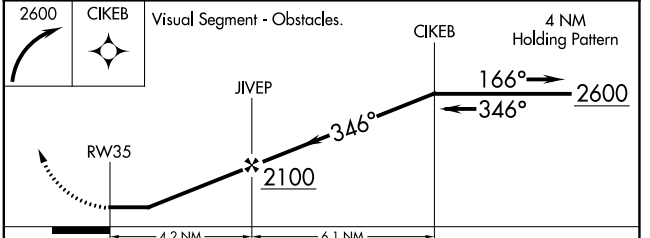
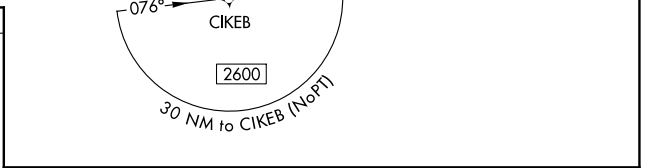
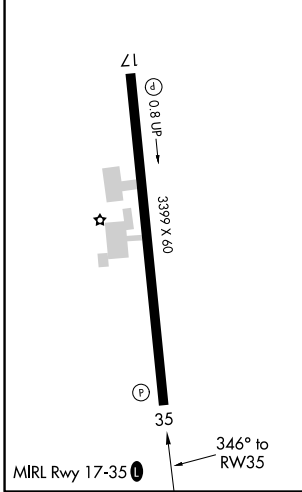
**▽** DME/DME RNP-0.3 NA. Use Castroville Muni altimeter setting; when not received, use Hondo Muni altimeter setting and increase all MDA 40 feet.  
**▲** NA Night landing: Rwy 35 NA. Helicopter visibility below 1 SM NA.

MISSED APPROACH: Climbing right turn to 2600 direct CIKEB and hold.

CVB AWOS-3 <b>119.25</b>	HOUSTON CENTER <b>134.95 269.4</b>	CTAF <b>122.9</b>
-----------------------------	---------------------------------------	----------------------



ELEV 702	TDZE 702
----------	----------



CATEGORY	A	B	C	D
LNAV MDA	1140-1	438 (500-1)	NA	
CIRCLING	1380-1	678 (700-1)	NA	

SC-3, 15 JUL 2021 to 12 AUG 2021

SC-3, 15 JUL 2021 to 12 AUG 2021