

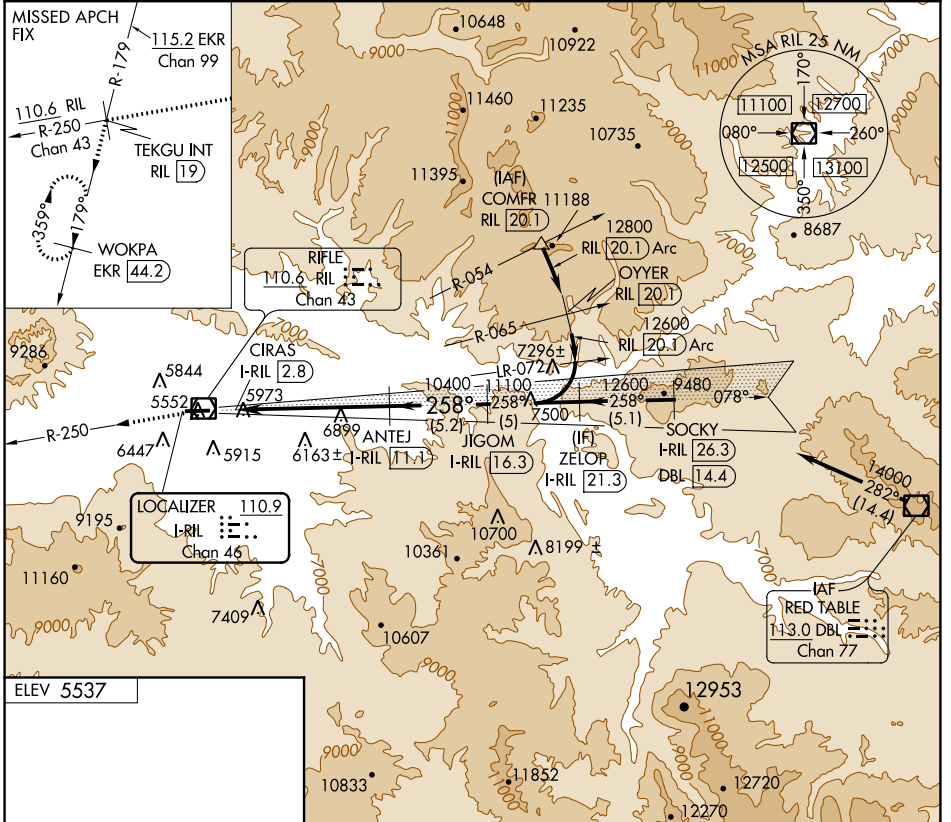
LOC/DME I-RIL 110.9 Chan 46	APP CRS 258R	Rwy Idg TDZE Apt Elev 5537	N/A N/A
---	------------------------	--	--------------------------

LOC/DME-A

RIFLE GARFIELD COUNTY (RIL)

<p>V Visibility reduction by helicopters NA. Use I-RIL DME when on localizer course.</p> <p>A -14°C</p> <p>83 Circling NA south of Rwy 8-26 at night.</p>	<p>MISSED APPROACH: Climb to 13000 on RIL VOR/DME R-250 to TEKGU INT/RIL 19 DME and on EKR VOR/DME R-179 to WOKPA/EKR 44.2 DME and hold, continue climb-in-hold to 13000.</p>
--	--

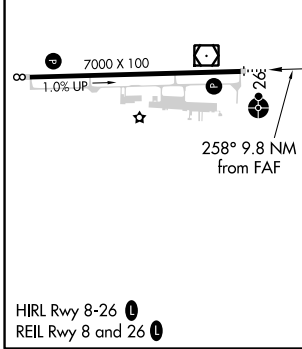
<p>ASOS 135.275</p>	<p>DENVER CENTER 134.95 327.075</p>	<p>UNICOM 122.8 (CTAF)</p>
--------------------------------	--	---------------------------------------



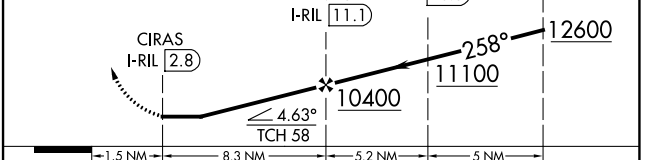
SW-1, 15 JUL 2021 to 12 AUG 2021

SW-1, 15 JUL 2021 to 12 AUG 2021

ELEV 5537



13000	TEKGU INT RIL 19	EKR R-179	WOKPA EKR 44.2	VGSI and descent angles not coincident (VGSI Angle 3.60/TCH 58).	ZELOP I-RIL 21.3
-------	------------------	-----------	----------------	--	------------------



CATEGORY	A	B	C	D
C CIRCLING	7780-1¾	2243 (2300-1¾)	7780-3 2243 (2300-3)	NA