

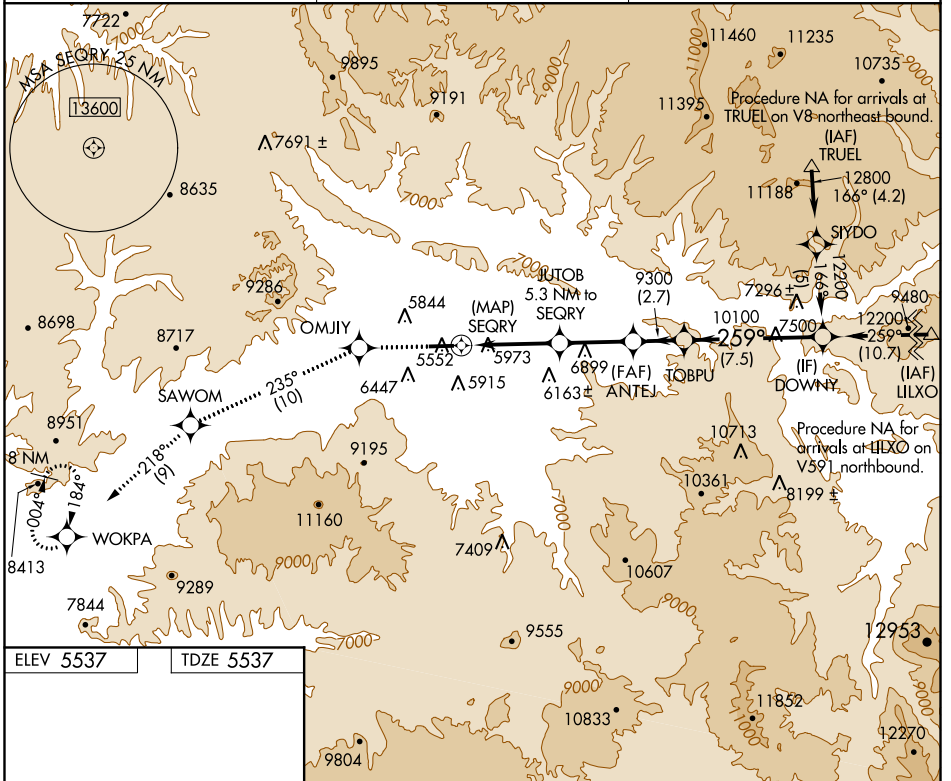
APP CRS	Rwy Idg	7000
259°	TDZE	5537
	Apt Elev	5537

RNAV (GPS) W RWY 26

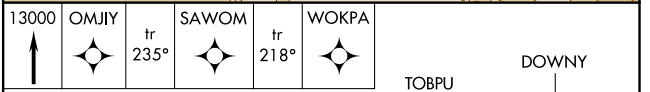
RIFLE GARFIELD COUNTY (R.I.L.)

 DME/DME RNP-0.3 NA. Visibility reduction by helicopters NA. Circling NA south of Rwy 8-26 at night. Inoperative table does not apply.	 MISSED APPROACH: Climb to 13000 direct OMJY and on track 235° to SAWOM and on track 218° to WOKPA and hold, continue climb-in-hold to 13000.
---	--

ASOS 135.275	DENVER CENTER 134.95 327.075	UNICOM 122.8 (CTAF)
------------------------	--	-------------------------------



ELEV 5537	TDZE 5537
-----------	-----------



HIRL Rwy 8-26

REIL Rwy 8 and 26

	13000	OMJY	tr 235°	SAWOM	tr 218°	WOKPA	TOBPU	DOWNNY	
				JUTOB 5.3 NM to SEQRY	ANTEJ 5.3 NM to SEQRY				
				3.7 NM to SEQRY	TCH 58				
				7760	9300	10100		12200	
				0.5	3.7 NM	1.6 NM	4 NM	2.7 NM	7.5 NM
CATEGORY		A		B		C		D	
LNAV MDA		7180-1¼ 1643 (1700-1¼)		7180-1½ 1643 (1700-1½)		7180-3 1643 (1700-3)		NA	
CIRCLING		7180-1¼ 1643 (1700-1¼)		7180-1½ 1643 (1700-1½)		7180-3 1643 (1700-3)		NA	

SW-1, 15 JUL 2021 to 12 AUG 2021

SW-1, 15 JUL 2021 to 12 AUG 2021