

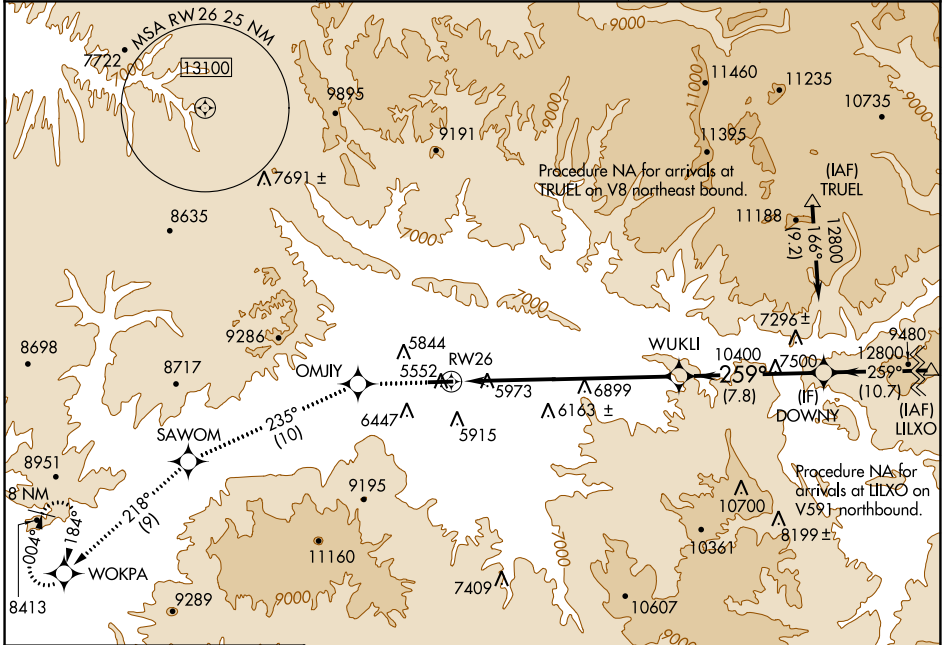
WAAS CH 93708 W26A	APP CRS 259°	Rwy Idg TDZE Apt Elev	7000 5537 5537
--	------------------------	-----------------------------	---

RNAV (GPS) X RWY 26

RIFLE GARFIELD COUNTY (R.I.L)

<p>NA</p> <p>-14°C</p>	DME/DME RNP- 0.3 NA.	<p>ODALS</p>	<p>MISSED APPROACH: Climb to 13000 direct OMJIY and on track 235° to SAWOM and on track 218° to WOKPA and hold, continue climb-in-hold to 13000.</p>
------------------------	----------------------	--------------	--

ASOS 135.275	DENVER CENTER 134.95 327.075	UNICOM 122.8 (CTAF)
------------------------	--	-------------------------------



SW-1, 15 JUL 2021 to 12 AUG 2021

ELEV 5537	TDZE 5537
-----------	-----------

Missed approach obstructions require a minimum climb gradient of 290 ft/NM to 9600 feet; if unable to meet climb gradient, see RNAV (GPS) W RWY 26.



13000	OMJIY	tr 235°	SAWOM	tr 218°	WOKPA	DOWNY
-------	-------	---------	-------	---------	-------	-------

