

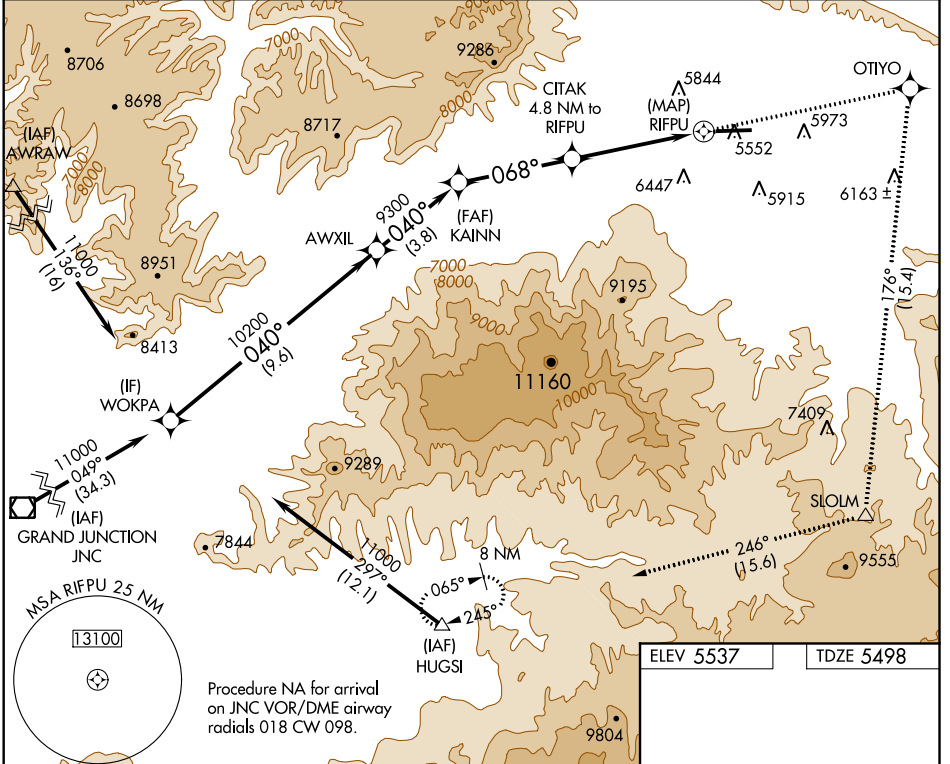
APP CRS	Rwy Idg	<b>7000</b>
<b>068°</b>	TDZE	<b>5498</b>
	Apt Elev	<b>5537</b>

# RNAV (GPS) Y RWY 8

RIFLE GARFIELD COUNTY (RIL)

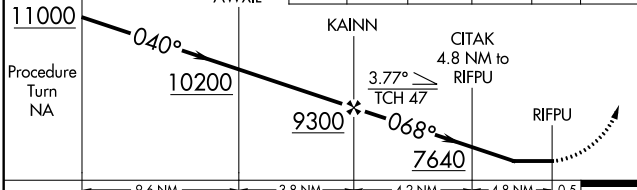
<p>DME/DME RNP-0.3 NA. Visibility reduction by helicopters NA.  -14°C Circling NA south of Rwy 8-26 at night.</p>	<p>MISSED APPROACH: Climb to 13000 direct OTIYO and right turn on track 176° to SLOLM and on track 246° to HUGSI and hold, continue climb-in-hold to 13000.</p>
---	---

ASOS <b>135.275</b>	DENVER CENTER <b>134.95 327.075</b>	UNICOM <b>122.8 (CTAF)</b>
------------------------	--	-------------------------------



VGSI and descent angles not coincident (VGSI Angle 3.00/TCH 47).

WOKPA	AWXIL	13000 OTIYO	SLOLM	HUGSI
		tr 176°	tr 246°	



CATEGORY	A	B	C	D
LNVA MDA	7420-1¼ 1922 (1900-1¼)	7420-1½ 1922 (1900-1½)	7420-3 1922 (1900-3)	NA
CIRCLING	7420-1¼ 1883 (1900-1¼)	7420-1½ 1883 (1900-1½)	7420-3 1883 (1900-3)	NA

ELEV 5537	TDZE 5498
-----------	-----------

SW-1, 15 JUL 2021 to 12 AUG 2021

SW-1, 15 JUL 2021 to 12 AUG 2021