

WAAS CH 93731 W31A	APP CRS 319°	Rwy Idg 4399 TDZE 1943 Apt Elev 1944
--	------------------------	---

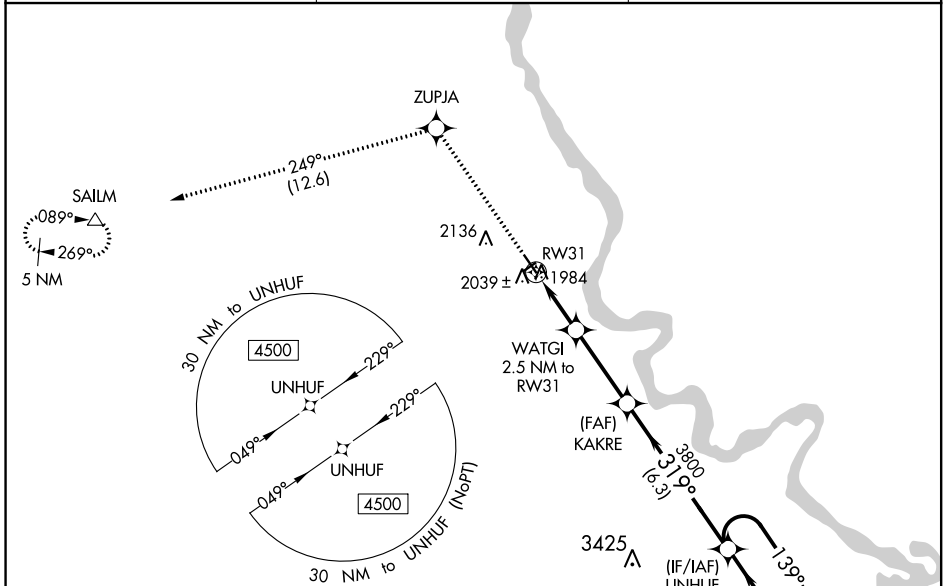
RNAV (GPS) RWY 31

MANDAN MUNI (Y19)

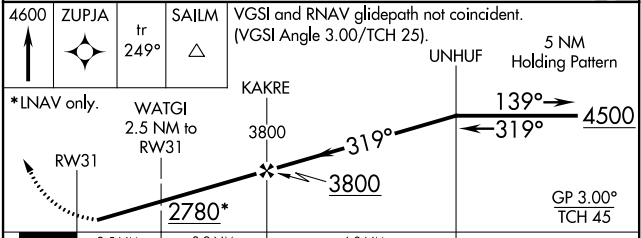
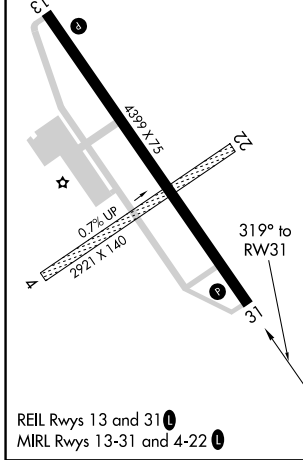
⚠ Baro-VNAV NA when using Bismarck altimeter setting. For uncompensated Baro-VNAV systems, LNAV/VNAV NA below -18°C (0°F) or above 54°C (130°F). DME/DME RNP-0.3 NA. When local altimeter setting not received, use Bismarck altimeter setting and increase all DA 54 feet and LNAV/VNAV all Cats visibility ½ mile, increase all MDA 60 feet and LNAV Cat C/D visibility ½ mile and Circling Cat D ¼ mile. Helicopter visibility reduction below ¾ SM NA. Circling to Rwys 4 and 22 NA.

MISSED APPROACH: Climb to 4600 direct ZUPJA and on track 249° to SAILM and hold.

AWOS-3 118.225	BISMARCK APP CON ★ 126.3 298.9	UNICOM 122.8 (CTAF) 0
--------------------------	--	---------------------------------



ELEV 1944	TDZE 1943
	2059 ± A



CATEGORY	A	B	C	D
LPV DA	2193-1 250 (300-1)			
LNAV/VNAV DA	2220-1 277 (300-1)			
LNAV MDA	2300-1 357 (400-1)			
C CIRCLING	2360-1 416 (500-1)	2460-1 516 (600-1)	2460-1½ 516 (600-1½)	2560-2 616 (700-2)

NC-1, 15 JUL 2021 to 12 AUG 2021

NC-1, 15 JUL 2021 to 12 AUG 2021