

WAAS CH <b>86822</b> <b>W22A</b>	APP CRS <b>216°</b>	Rwy Idg TDZE Apt Elev	<b>5199</b> <b>3472</b> <b>3543</b>
--	------------------------	-----------------------------	---

# RNAV (GPS) RWY 22

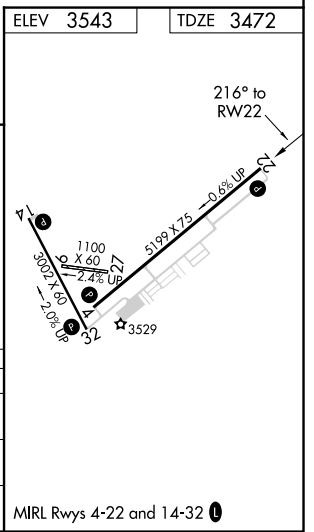
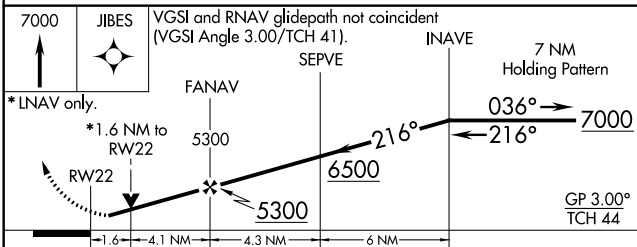
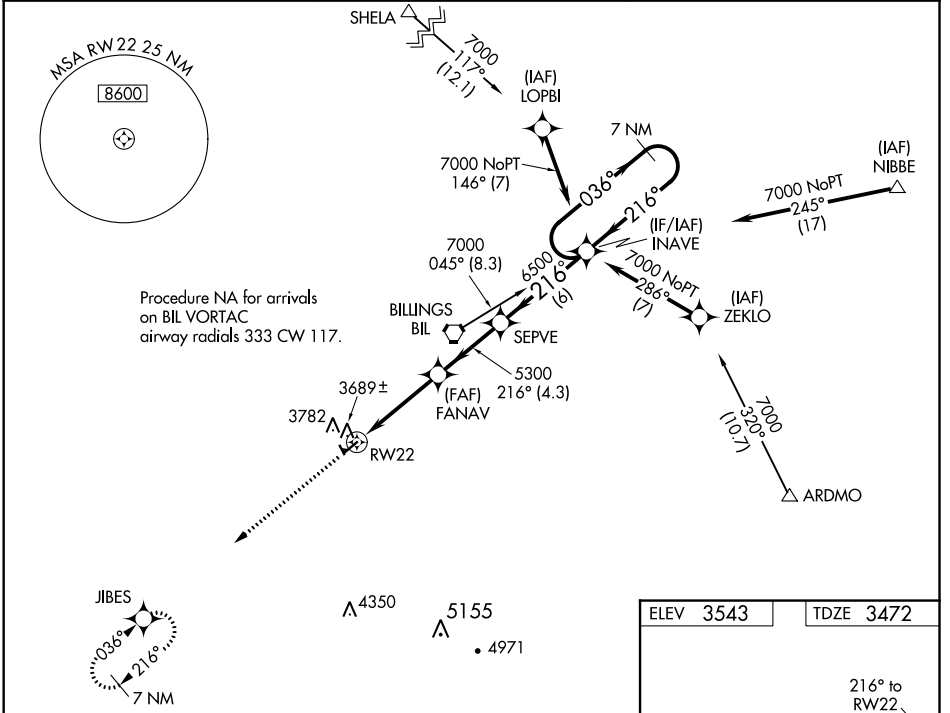
LAUREL MUNI (6S8)

**RNP APCH.**

**⚠** For uncompensated Baro-VNAV systems, LNAV/VNAV NA below -21°C or above 53°C. When local altimeter setting not received, use Billings altimeter setting. Baro-VNAV and VDP NA when using Billings altimeter setting. Rwy 22 helicopter visibility reduction below ¼ SM NA.

**MISSED APPROACH:** Climb to 7000 direct JIBES and hold, continue climb-in-hold to 7000.

AWOS-2 <b>135.05</b>	BILLINGS APP CON <b>119.2 120.5 284.6</b>	AUNICOM <b>123.05 (CTAF)</b>
-------------------------	--	---------------------------------



CATEGORY	A	B	C	D
LPV DA	3767-1		295 (300-1)	
LNAV/VNAV DA	3965-1½		493 (500-1½)	
LNAV MDA	4000-1	528 (500-1)	4000-1½	528 (500-1½)

NW-1, 15 JUL 2021 to 12 AUG 2021

NW-1, 15 JUL 2021 to 12 AUG 2021