

VORTAC BIL 114.5 Chan 92	APP CRS 208°	Rwy Idg TDZE Apt Elev	5199 3472 3543
----------------------------------------------	------------------------	-----------------------------	-------------------------------------------

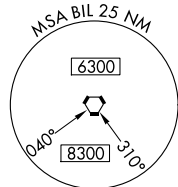
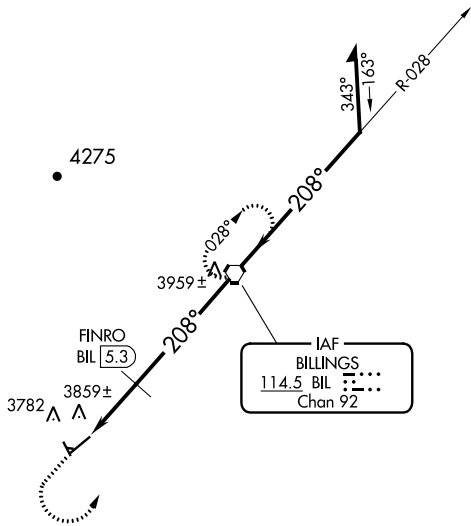
VOR RWY 22

LAUREL MUNI (6S8)

⚠ When local altimeter setting not received, use Billings altimeter setting.
⚠ Rwy 22 helicopter visibility reduction below ¼ SM NA. Circling NA to Rwys 9 and 27. Circling Rwy 14, 32 NA at night.

MISSED APPROACH: Climb to 4700 then climbing left turn to 6300 direct BIL VORTAC and hold.

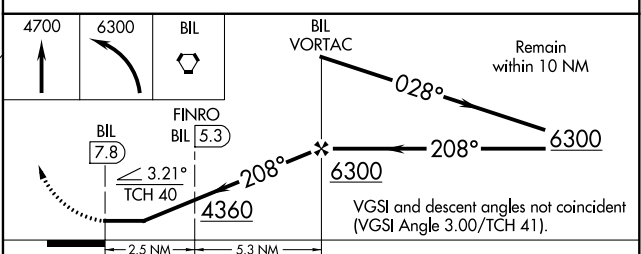
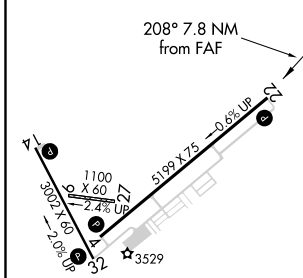
AWOS-2 135.05	BILLINGS APP CON 119.2 120.5 284.6	AUNICOM 123.05 (CTAF) 📻
-------------------------	----------------------------------------------	------------------------------------------



NW-1, 15 JUL 2021 to 12 AUG 2021

NW-1, 15 JUL 2021 to 12 AUG 2021

ELEV 3543	TDZE 3472
-----------	-----------



CATEGORY	A	B	C	D
S-22	4360-1¼ 888 (900-1¼)		4360-2¾ 888 (900-2¾)	4360-3 888 (900-3)
CIRCLING	4360-1¼ 817 (900-1¼)		4360-2¾ 817 (900-2¾)	4360-3 817 (900-3)
FINRO FIX MINIMUMS				
S-22	4160-1 688 (700-1)		4160-2 688 (700-2)	4160-2½ 688 (700-2½)
CIRCLING	4220-1 677 (700-1)		4220-2 677 (700-2)	4340-2¾ 797 (800-2¾)

MIRL Rwys 4-22 and 14-32 **📻**

FAF to MAP 7.8 NM

Knots	60	90	120	150	180
Min:Sec	7:48	5:12	3:54	3:07	2:36