

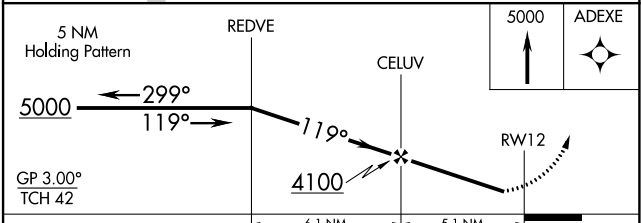
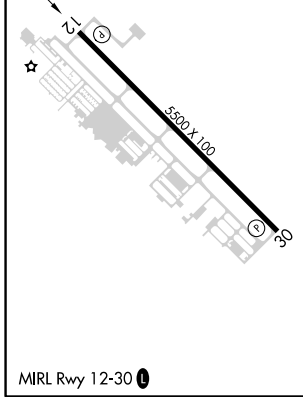
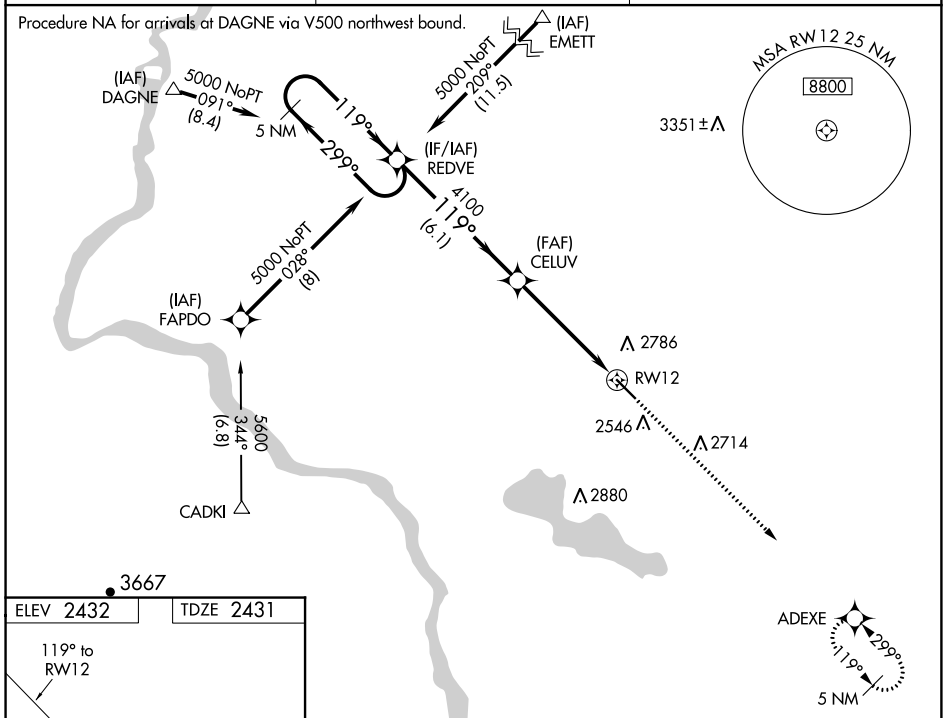
WAAS CH 97707 W12A	APP CRS 119°	Rwy Idg TDZE Apt Elev	5500 2431 2432
--	------------------------	-----------------------------	---

RNAV (GPS) RWY 12

CALDWELL INDUSTRIAL (EUL)

RNP APCH.	<p>▽ Rwy 12 helicopter visibility reduction below ¼ SM NA. Baro-VNAV NA when using Boise altimeter setting. For uncompensated Baro-VNAV systems, LNAV/VNAV NA below -19°C or above 44°C. When local altimeter setting not received, use Boise altimeter setting and increase all DA/MDA 120 feet and all visibilities ½ mile.</p>	<p>MISSED APPROACH: Climb to 5000 direct ADEXE and hold.</p>

AWOS-3PT 135.075	BIG SKY APP CON 119.6 269.4	UNICOM 122.7 (CTAF) 0
----------------------------	---------------------------------------	---------------------------------



CATEGORY	A	B	C	D
LPV DA	2700-1 269 (300-1)			
LNAV/VNAV DA	2994-2 563 (600-2)			
LNAV MDA	2840-1	409 (500-1)	2840-1¼	409 (500-1¼)

NW-1, 15 JUL 2021 to 12 AUG 2021

NW-1, 15 JUL 2021 to 12 AUG 2021