

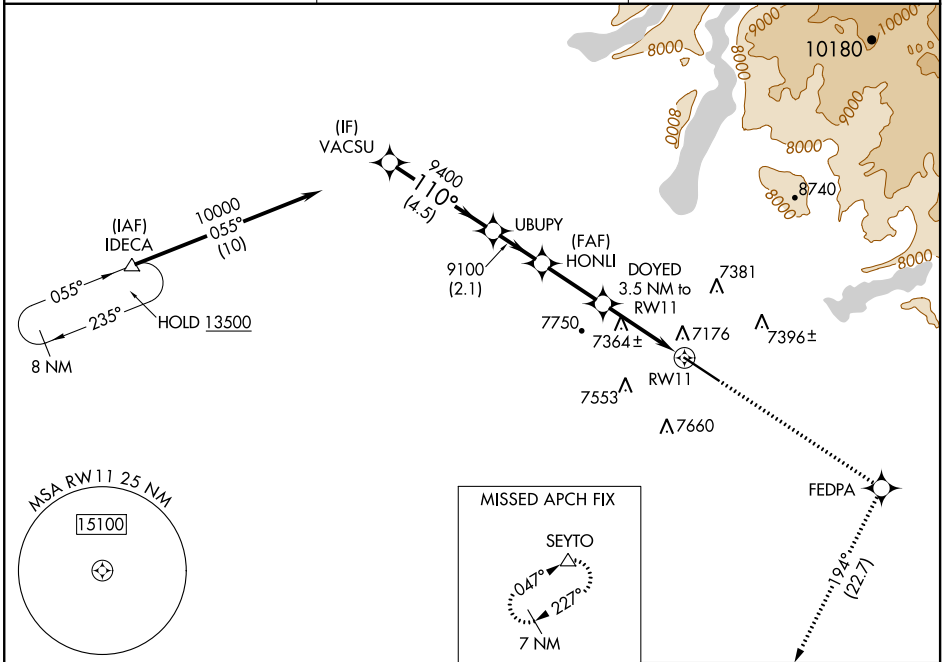
WAAS CH 58326 W11A	APP CRS 110°	Rwy Idg TDZE Apt Elev	8900 7096 7096
--	------------------------	-----------------------------	---

RNAV (GPS) RWY 11

RALPH WENZ FLD (PNA)

<p>▼ Baro-VNAV NA. When local altimeter setting not received, use Big Piney altimeter setting and increase all DA 58 feet and all MDA 60 feet; increase LPV and LNAV/VNAV all Cats, LNAV and Circling Cat C/D visibility ¼ mile. Circling NA south of Rwy 11/29. DME/DME RNP-0.3 NA. VDP NA with Big Piney altimeter setting.</p>	<p>ODALS</p>	<p>MISSED APPROACH: Climb to 10000 direct FEDPA and on track 194° to SEYTO and hold.</p>
--	--------------	--

AWOS-3 118.325	SALT LAKE CENTER 128.35 239.25	UNICOM 122.8 (CTAF) 0
--------------------------	--	---------------------------------

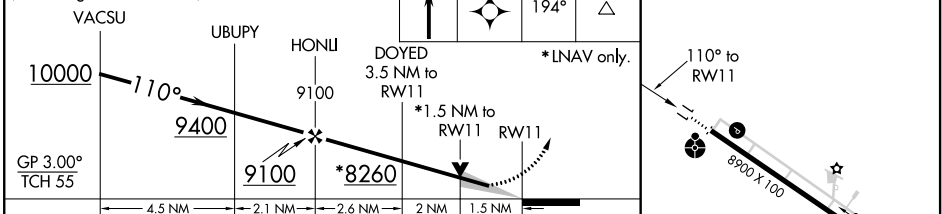


NW-1, 15 JUL 2021 to 12 AUG 2021

NW-1, 15 JUL 2021 to 12 AUG 2021

VGSI and RNAV glidepath not coincident (VGSI Angle 2.83/TCH 40).

10000	FEDPA	SEYTO
ELEV 7096	tr 194°	TDZE 7096



CATEGORY	A	B	C	D
LPV DA		7346-¾	250 (300-¾)	
LNAV/VNAV DA		7355-¾	259 (300-¾)	
LNAV MDA	7620-1	524 (600-1)	7620-1½	524 (600-1½)
CIRCLING	7620-1	524 (600-1)	7640-1½ 544 (600-1½)	7720-2 624 (700-2)

MIRL Rwy 11-29 0
REIL Rwy 11 and 29 0