

WAAS CH 40426 W29A	APP CRS 291°	Rwy ldg TDZE Apt Elev	8900 7078 7096
---------------------------------	------------------------	-----------------------------	---

RNAV (GPS) RWY 29

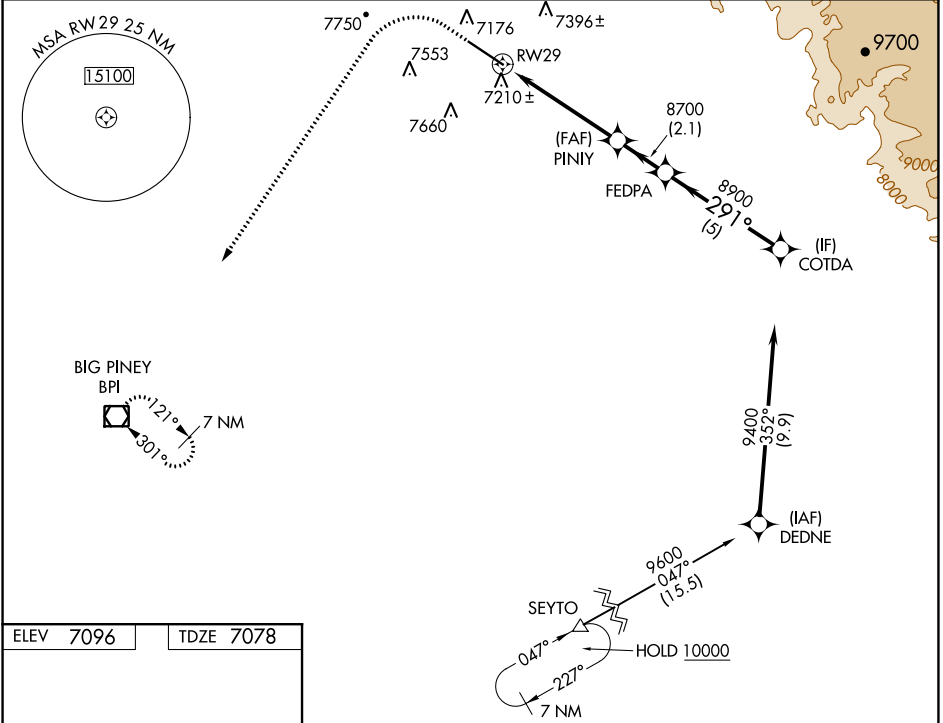
RALPH WENZ FLD (PNA)

Baro-VNAV NA. When local altimeter setting not received, use Big Piney altimeter setting and increase all DA 58 feet and all MDA 60 feet; increase LPV all Cats, LNAV and Circling Cat C/D visibility ¼ mile, and LNAV/VNAV all Cats visibility ⅛ mile. Circling NA south of Rwy 11/29. DME/DME RNP-0,3 NA. Helicopter visibility reduction below ¾ SM NA. VDP NA with Big Piney altimeter setting.

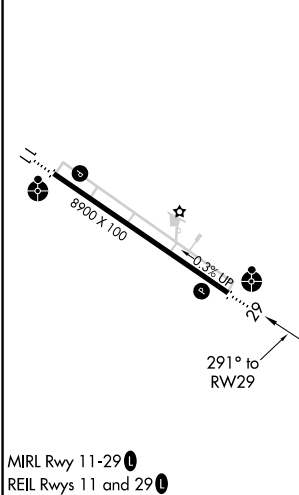


MISSED APPROACH: Climb to 7600 then climbing left turn to 10000 direct BPI VOR/DME and hold.

AWOS-3 118.325	SALT LAKE CENTER 128.35 239.25	UNICOM 122.8 (CTAF)
--------------------------	--	-------------------------------



ELEV 7096	TDZE 7078
-----------	-----------



7600	10000	BPI	VGSI and RNAV glidepath not coincident (VGSI Angle 2.83/TCH 40).	COTDA	
↑	↶	☐			
*LNAV only.		*1.5 NM to RWY29	PINIY	FEDPA	
RWY29		8700	8700	8900	
1.5 NM		3.5 NM	2.1 NM	5 NM	
↑	↶	☐	9400	GP 3.00° TCH 55	
CATEGORY		A	B	C	D
LPV DA		7328-3¼		250 (300-¾)	
LNAV/VNAV DA		7606-1¾		528 (600-1¾)	
LNAV MDA		7600-1	522 (600-1)	7600-1½	522 (600-1½)
CIRCLING		7600-1	504 (600-1)	7640-1½	7720-2
			544 (600-1½)	624 (700-2)	

NW-1, 15 JUL 2021 to 12 AUG 2021

NW-1, 15 JUL 2021 to 12 AUG 2021