

WAAS CH <b>61026</b> <b>W19A</b>	APP CRS <b>193°</b>	Rwy Idg TDZE Apt Elev	<b>5398</b> <b>85</b> <b>85</b>
--	------------------------	-----------------------------	---------------------------------------

# RNAV (GPS) RWY 19

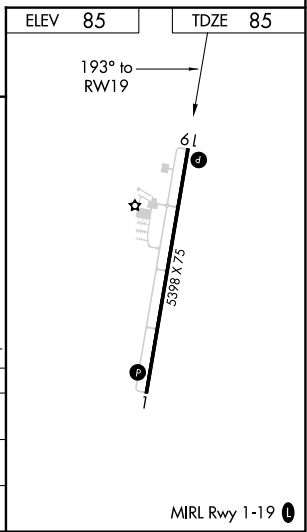
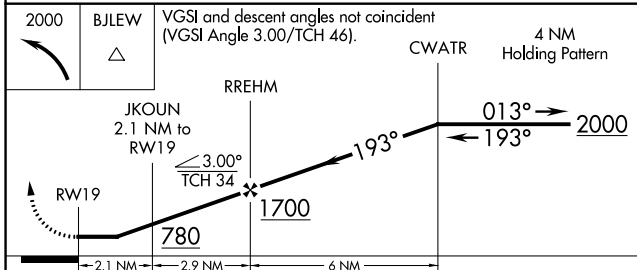
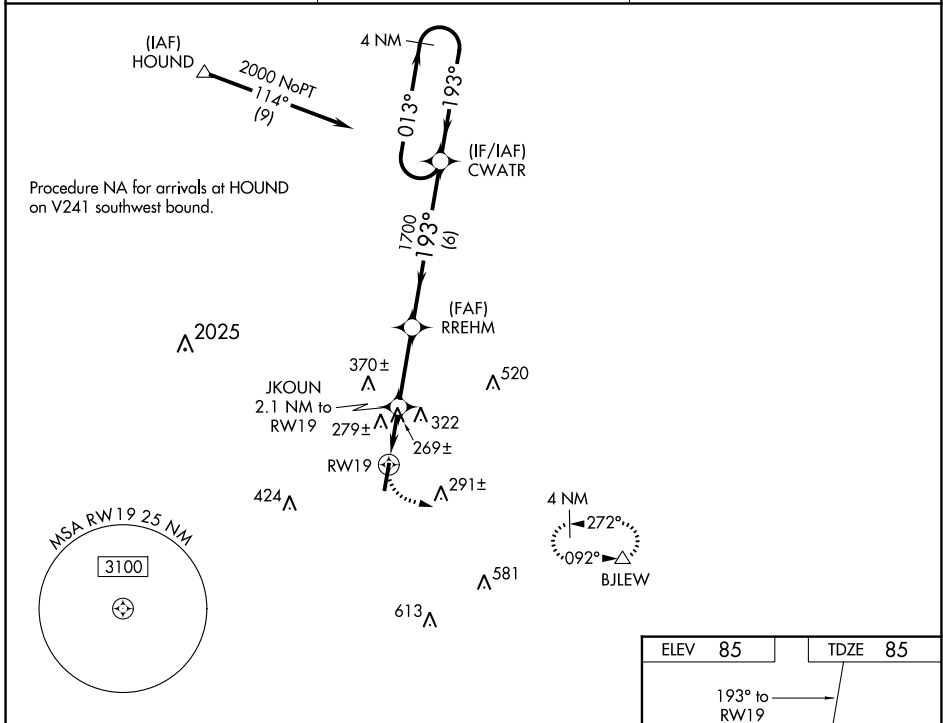
TRI-COUNTY (1J~~0~~)

**RNP APCH**

**Procedure NA at night. Circling NA to Rwy 1. Rwy 19 helicopter visibility reduction below 1 SM NA. When local altimeter setting not received, use Marianna altimeter setting and increase all MDA 60 feet, and increase LP, LNAV and Circling Cat C visibility 1/2 SM.**

**MISSED APPROACH: Climbing left turn to 2000 direct BJLEW and hold.**

AWOS-3PT <b>119.825</b>	CAIRNS APP CON ★ <b>133.75 270.35</b>	UNICOM <b>122.725 (CTAF) 0</b>
----------------------------	--	-----------------------------------



CATEGORY	A	B	C	D
LP MDA	580-1	495 (500-1)	580-1 <sup>3</sup> / <sub>8</sub> 495 (500-1 <sup>3</sup> / <sub>8</sub> )	NA
LNAV MDA	600-1	515 (600-1)	600-1 <sup>3</sup> / <sub>8</sub> 515 (600-1 <sup>3</sup> / <sub>8</sub> )	NA
CIRCLING	640-1 555 (600-1)	660-1 575 (600-1)	660-1 <sup>1</sup> / <sub>2</sub> 575 (600-1 <sup>1</sup> / <sub>2</sub> )	NA

SE-3, 15 JUL 2021 to 12 AUG 2021

SE-3, 15 JUL 2021 to 12 AUG 2021