

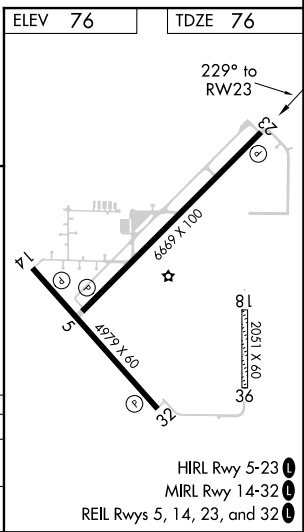
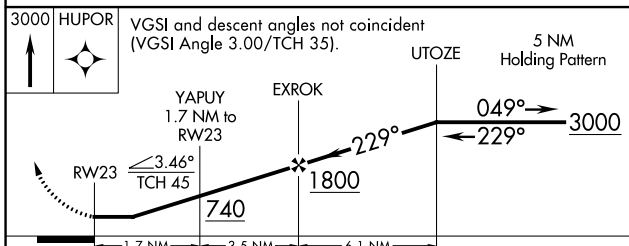
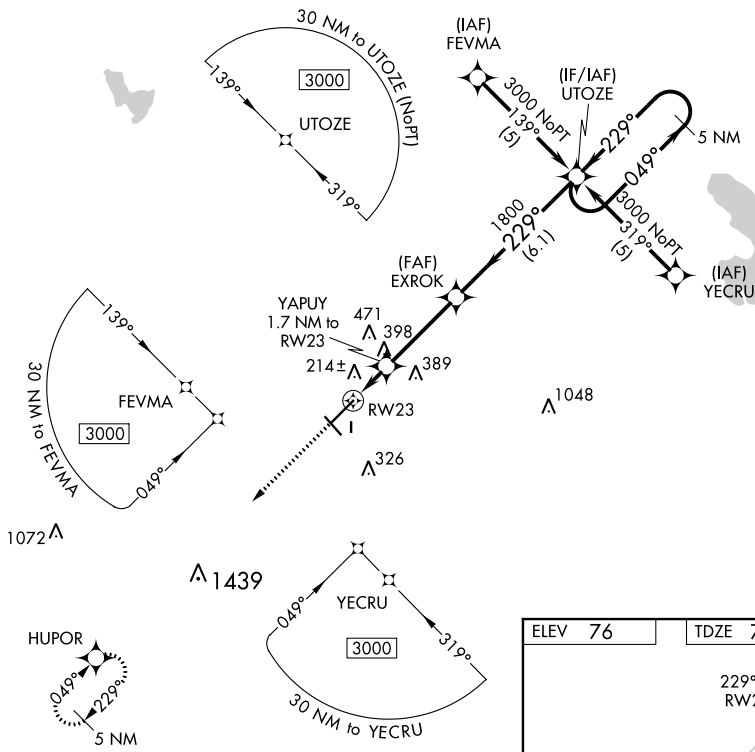
APP CRS	Rwy Idg	6669
229°	TDZE	76
	Apt Elev	76

RNAV (GPS) RWY 23

WILLISTON MUNI (X60)

RNP APCH.	When local altimeter setting not received, use Ocala altimeter setting and increase all MDAs 60 feet and visibility LNAV Cat C ¼ SM. Circling Rwy 14, 32 NA at night. Rwy 23 helicopter visibility reduction below ¾ SM NA. Circling NA to Rwy's 18 and 36.	MISSED APPROACH: Climb to 3000 direct HUPOR and hold.
-----------	---	--

AWOS-3T 118.425	JACKSONVILLE APP CON 118.6 251.15	UNICOM 122.975 (CTAF) 0
---------------------------	---	-----------------------------------



CATEGORY	A	B	C	D
LNAV MDA	480-1	404 (500-1)	480-1¼ 404 (500-1¼)	NA
CIRCLING	520-1 444 (500-1)	540-1 464 (500-1)	540-1½ 464 (500-1½)	NA

HIRL Rwy 5-23 0
MIRL Rwy 14-32 0
REIL Rwy's 5, 14, 23, and 32 0

SE-3, 15 JUL 2021 to 12 AUG 2021

SE-3, 15 JUL 2021 to 12 AUG 2021