

APP CRS	Rwy Idg	6669
049°	TDZE	74
	Apt Elev	76

RNAV (GPS) RWY 5

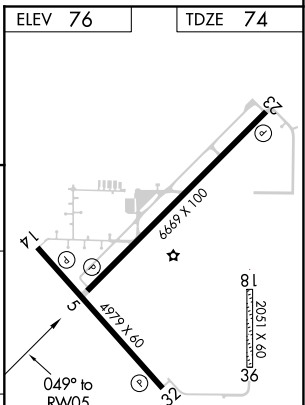
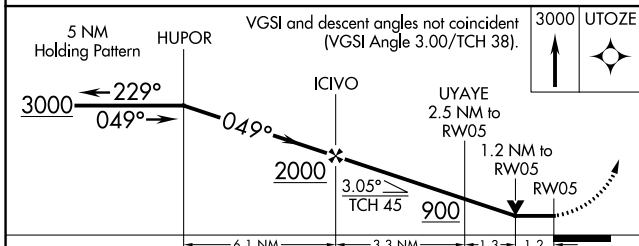
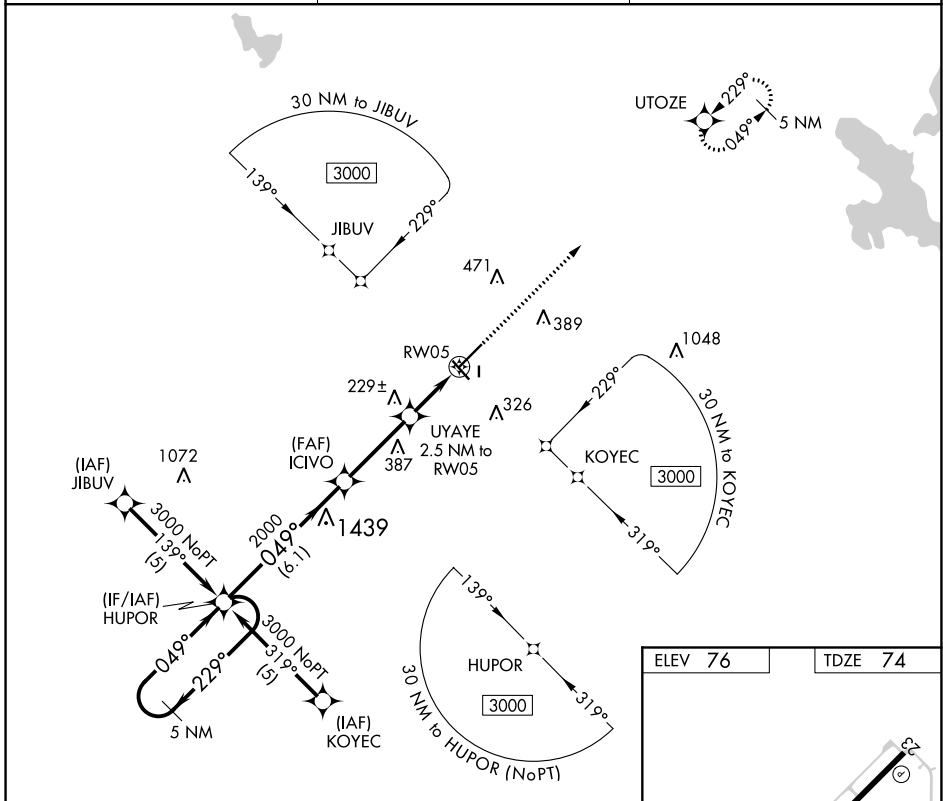
WILLISTON MUNI (X60)

RNP APCH.

When local altimeter setting not received, use Ocala altimeter setting and increase all MDAs 60 feet and visibility LNAV Cat C 1/8 SM. Circling Rwy 14, 32 NA at night. Rwy 5 helicopter visibility reduction below 3/4 SM NA. Circling NA to Rwy 18 and 36.

MISSED APPROACH:
Climb to 3000 direct UTOZE and hold.

AWOS-3T 118.425	JACKSONVILLE APP CON 118.6 251.15	UNICOM 122.975 (CTAF) 0
---------------------------	---	-----------------------------------



CATEGORY	A	B	C	D
LNAV MDA	480-1	406 (500-1)	480-1 1/4 406 (500-1 1/4)	NA
CIRCLING	520-1 444 (500-1)	540-1 464 (500-1)	540-1 1/2 464 (500-1 1/2)	NA

HIRL Rwy 5-23
MIRL Rwy 14-32
REIL Rwy 5, 14, 23, and 32

SE-3, 15 JUL 2021 to 12 AUG 2021

SE-3, 15 JUL 2021 to 12 AUG 2021