


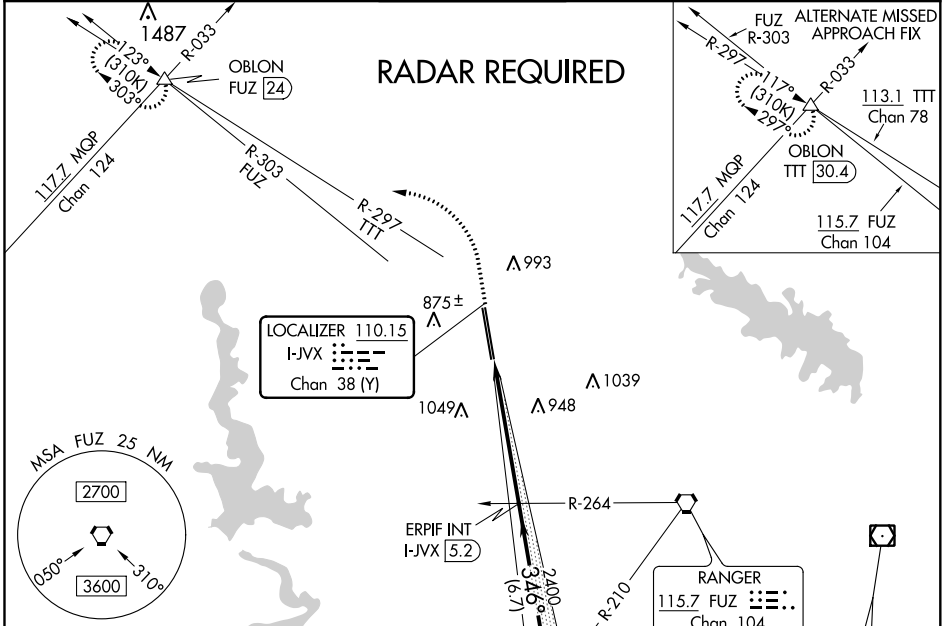
LOC/DME I-JVX <b>110.15</b> Chan <b>38</b> (Y)	APP CRS <b>346°</b>	Rwy 34R Idg <b>11000</b> TDZE <b>681</b> Apt Elev <b>723</b>	Rwy 34L Idg <b>10399</b> TDZE <b>686</b> Apt Elev <b>723</b>
--	------------------------	--	--

# ILS or LOC RWY 34R

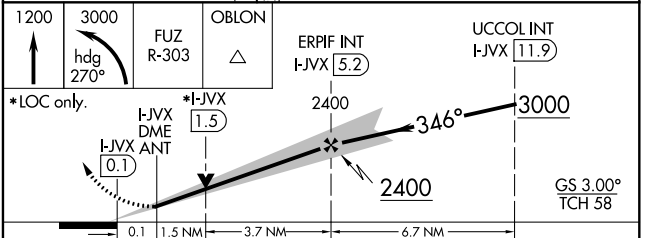
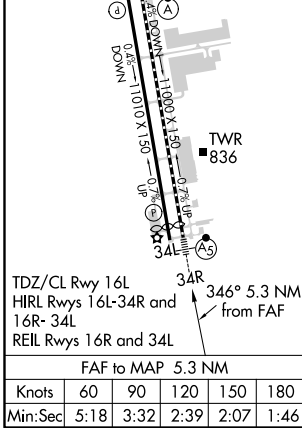
FORT WORTH ALLIANCE (AFW)

<p><b>▼</b> Circling NA east of Rwy 16L-34R. <b>▲</b> For inop ALS, increase S-ILS 34R Cat E visibility to RVR 4000 and S-LOC 34R, Cat E visibility to 1/8 SM.</p>	<p>MALSR  </p>	<p>MISSED APPROACH: Climb to 1200 then climbing left turn to 3000 on heading 270° and FUZ VORTAC R-303 to OBLON INT/FUZ 24 DME and hold.</p>
--	---	--

ATIS <b>126.925</b>	REGIONAL APP CON <b>118.1 306.95</b>	ALLIANCE TOWER <b>135.15 257.9</b>	GND CON <b>132.65 306.2</b>	CLNC DEL <b>128.725</b>
------------------------	---	---------------------------------------	--------------------------------	----------------------------



ELEV <b>723</b>	<b>D</b> TDZE 34R <b>681</b> TDZE 34L <b>686</b>
-----------------	---



CATEGORY	A	B	C	D	E
S-ILS 34R	881/18 200 (200-1/2)				
S-LOC 34R	1240/24	559 (600-1/2)	1240/60	559 (600-1/4)	
SIDESTEP 34L	1240-1	554 (600-1)	1240-1 1/2 554 (600-1/2)	1240-2	554 (600-2)
<b>C</b> CIRCLING	1240-1 517 (600-1)	1320-1 597 (600-1)	1360-1 3/4 637 (700-1 3/4)	1380-2 657 (700-2)	1380-2 1/4 657 (700-2 1/4)

SC-2, 15 JUL 2021 to 12 AUG 2021

SC-2, 15 JUL 2021 to 12 AUG 2021