

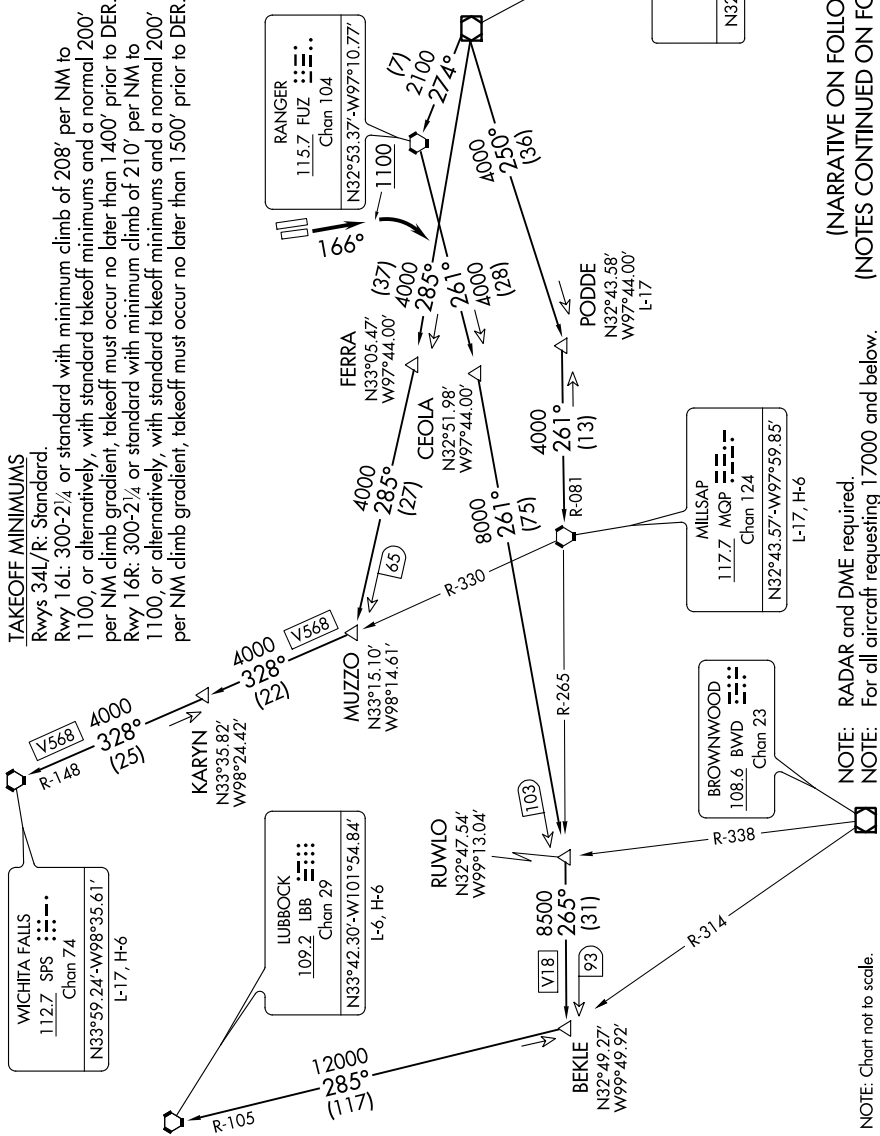
KINGDOM NINE DEPARTURE

SC-2, 15 JUL 2021 to 12 AUG 2021

ATIS 126.925
 CLINC DEL 128.725
 GND CON 132.65 306.2
 ALLIANCE TOWER 135.15 257.9
 REGIONAL DEP CON 118.1 306.95

TAKEOFF MINIMUMS

Rwys 34L/R: Standard.
 Rwy 16L: 300-2/4, or standard with minimum climb of 208' per NM to 1100, or alternatively, with standard takeoff minimums and a normal 200' per NM climb gradient, takeoff must occur no later than 1400' prior to DER.
 Rwy 16R: 300-2/4, or standard with minimum climb of 210' per NM to 1100, or alternatively, with standard takeoff minimums and a normal 200' per NM climb gradient, takeoff must occur no later than 1500' prior to DER.



(NARRATIVE ON FOLLOWING PAGE)
 (NOTES CONTINUED ON FOLLOWING PAGE)

NOTE: RADAR and DME required.
 NOTE: For all aircraft requesting 17000 and below.

NOTE: Chart not to scale.

KINGDOM NINE DEPARTURE

SC-2, 15 JUL 2021 to 12 AUG 2021