

WAAS CH 82541 W16B	APP CRS 166°	Rwy Idg 10600 TDZE 723 Apt Elev 723
--	------------------------	--

RNAV (GPS) RWY 16L

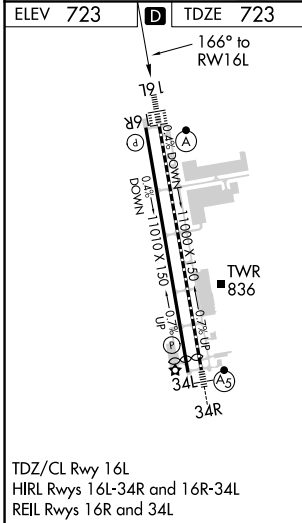
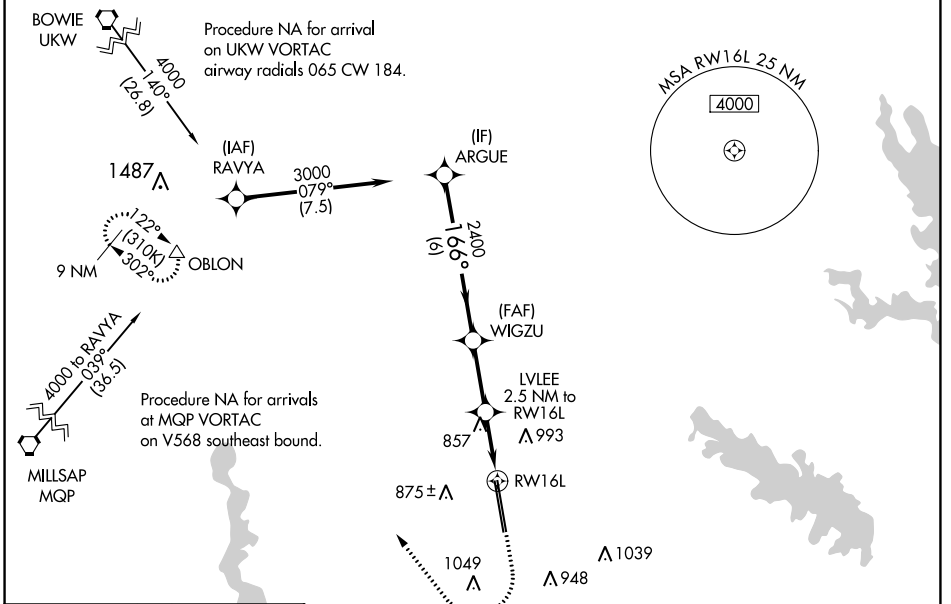
FORT WORTH ALLIANCE (AFW)

⚠ For uncompensated Baro-VNAV systems, LNAV/VNAV NA below -8°C (18°F) or above 54°C (130°F). Circling NA east of Rwy 16L-34R. DME/DME RNP-0.3 NA. For inop ALS, increase LPV Cat E visibility to RVR 4000, LNAV/VNAV all Cats visibility to RVR 4500 and LNAV Cat E visibility to RVR 6000.

ALS-F-2

MISSED APPROACH: Climb to 1200 then climbing right turn to 3000 direct OBLON and hold.

ATIS 126.925	REGIONAL APP CON 118.1 306.95	ALLIANCE TOWER 135.15 257.9	GND CON 132.65 306.2	CLNC DEL 128.725
------------------------	---	---------------------------------------	--------------------------------	----------------------------



	ARGUE	WIGZU	LVLEE	OBLON	
	3000	2400	2.5 NM to RWY 16L	△	
		2400	*1.1 NM to RWY 16L		
		*1560			
	GP 3.00° TCH 55				
	6 NM	2.6 NM	1.4 NM	1.1 NM	
CATEGORY	A	B	C	D	E
LPV DA		923/18	200 (200-½)		
LNAV/VNAV DA		1016/24	293 (300-½)		
LNAV MDA	1120/24	397 (400-½)	1120/35	397 (400-¾)	
C CIRCLING	1160-1 437 (500-1)	1320-1 597 (600-1)	1360-1¾ 637 (700-1¾)	1380-2 657 (700-2)	1380-2¼ 657 (700-2¼)

SC-2, 15 JUL 2021 to 12 AUG 2021

SC-2, 15 JUL 2021 to 12 AUG 2021