

VOR/DME ETL 110.2 Chan 39	APP CRS 095°	Rwy Idg TDZE Apt Elev N/A N/A 9070
---	------------------------	---

VOR/DME-A

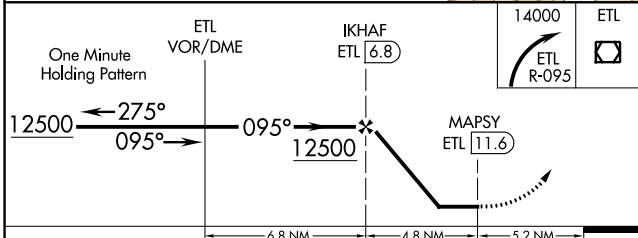
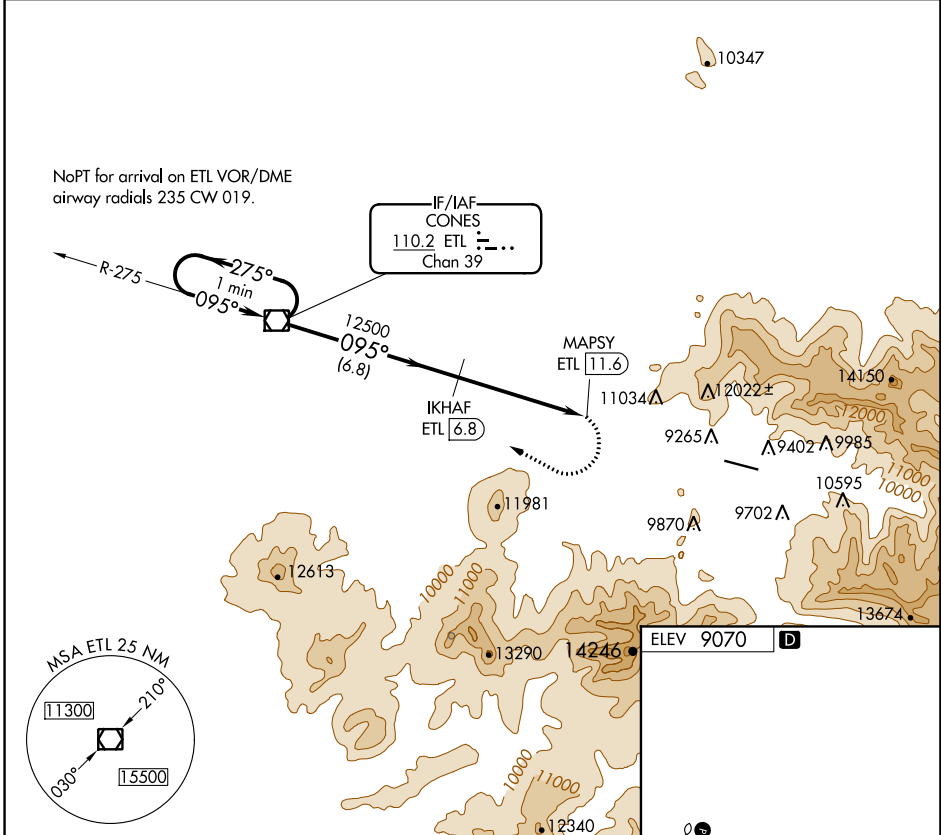
TELLURIDE RGNL (TEX)

⚠ Circling NA north of Rwy 9-27. Procedure NA at night.

❄ -18°C

MISSED APPROACH: Immediate climbing right turn to 14000 via ETL VOR/DME R-095 to ETL VOR/DME and hold.

AWOS-3 118.325	DENVER CENTER 125.35 354.05	UNICOM 123.0 (CTAF)
--------------------------	---------------------------------------	-------------------------------



CATEGORY	A	B	C	D
C CIRCLING	12420-6	3350 (3400-6)	NA	NA

ELEV 9070 **D**

14000 ETL **⊠**

ETL R-095

HIRL Rwy 9-27 **Ⓡ**

REIL Rwys 9 and 27 **Ⓡ**

SW-1, 15 JUL 2021 to 12 AUG 2021

SW-1, 15 JUL 2021 to 12 AUG 2021