

VORTAC EED <b>115.2</b> Chan <b>99</b>	APP CRS <b>335°</b>	Rwy Idg <b>8500</b> TDZE <b>707</b> Apt Elev <b>707</b>
--	------------------------	---

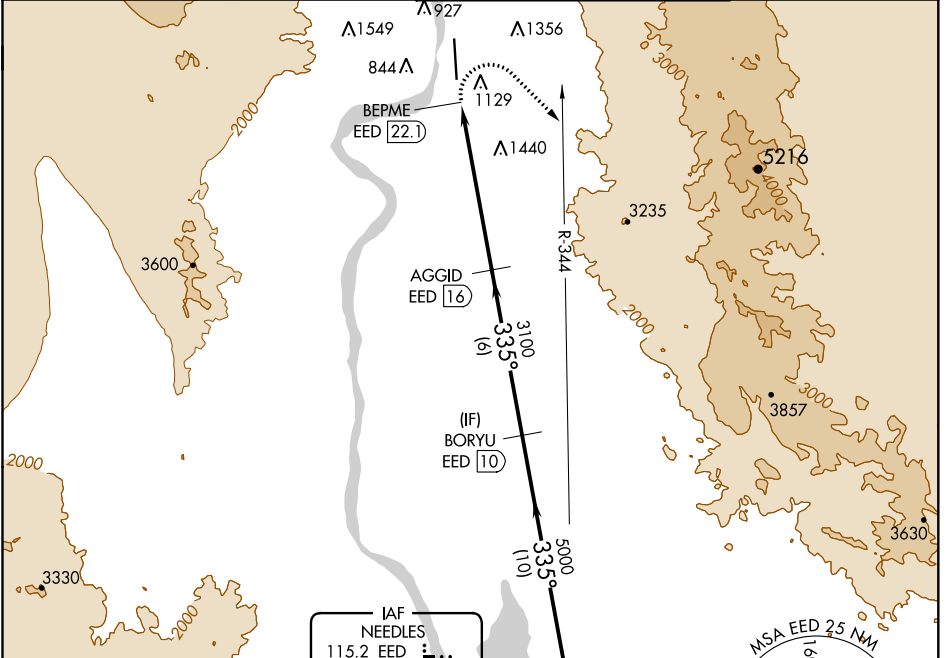
# VOR RWY 34

LAUGHLIN/BULLHEAD INTL (IFP)

**V** Rwy 34 helicopter visibility reduction below ¼ SM NA.  
**A** DME required. Circling Rwy 16 NA at night.

MISSED APPROACH: Climbing right turn to 6000 on heading 120° and EED VORTAC R-344 and hold.

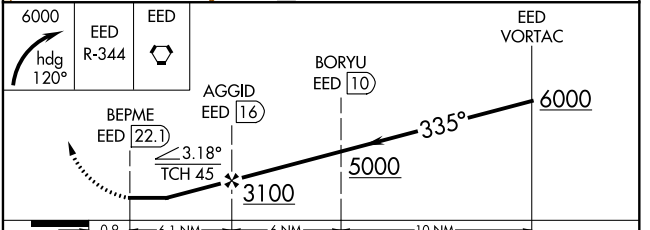
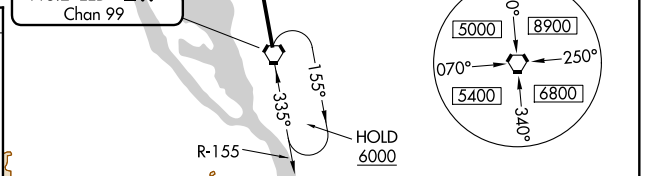
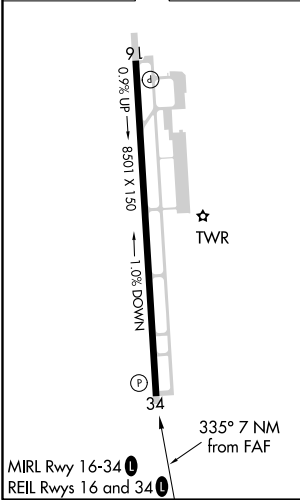
ATIS* <b>119.825</b>	LOS ANGELES CENTER <b>134.65 360.65</b>	BULLHEAD TOWER* <b>123.9 (CTAF)</b>	GND CON <b>118.25</b>
-------------------------	--	--	--------------------------



SW-4, 15 JUL 2021 to 12 AUG 2021

SW-4, 15 JUL 2021 to 12 AUG 2021

ELEV 707	<b>D</b> TDZE 707
----------	-------------------



	0.9	6.1 NM	6 NM	10 NM	
CATEGORY	A	B	C	D	
S-34	2840-1¼ 2133 (2200-1¼)	2840-1½ 2133 (2200-1½)	2840-3	2133 (2200-3)	
<b>C</b> CIRCLING	2840-1¼ 2133 (2200-1¼)	2840-1½ 2133 (2200-1½)	2840-3	2133 (2200-3)	