

APP CRS	Rwy Idg	3000
052°	TDZE	249
	Apt Elev	249

RNAV (GPS) RWY 5

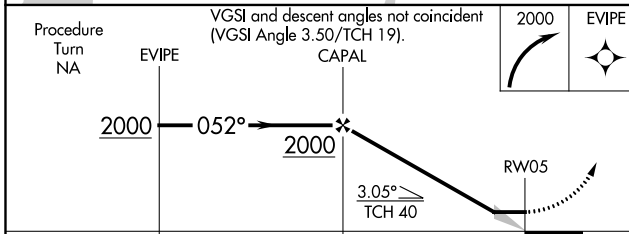
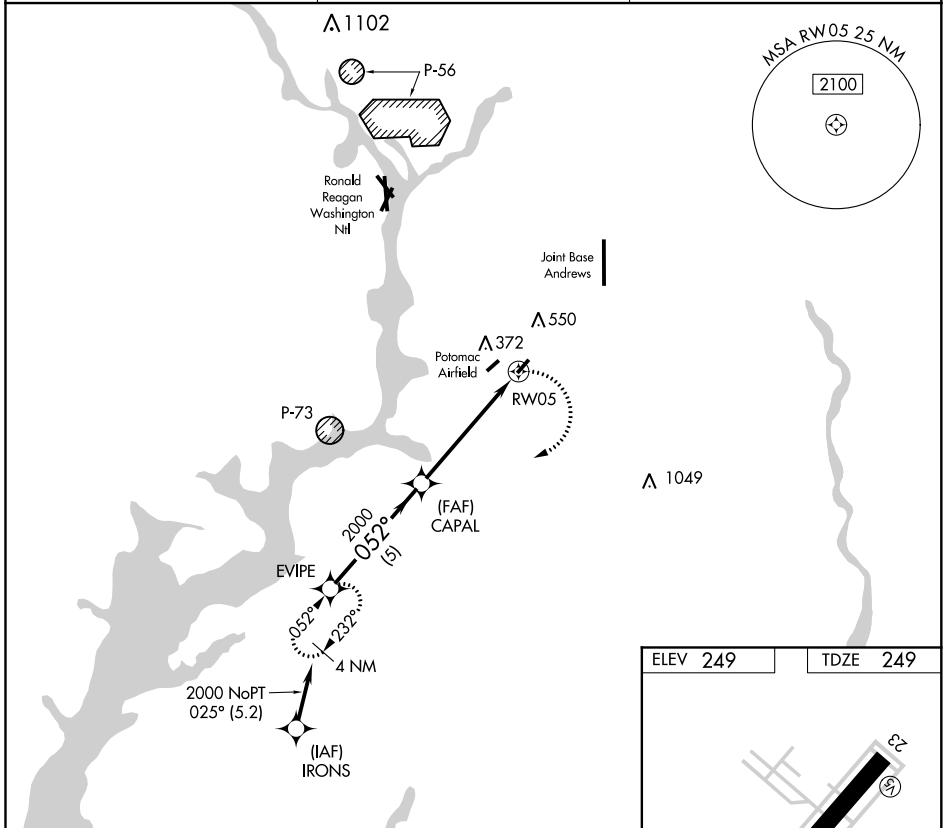
WASHINGTON EXEC/HYDE FLD (W32)

RNP APCH.
<p>▼ Use Joint Base Andrews allimeter setting.</p> <p>▲ NA Circling NW Rwy 5-23 NA.</p>

MISSED APPROACH: Climbing right turn to 2000 direct EVIPE WP and hold.

ADW ATIS	POTOMAC APP CON
133.675 251.05	124.7 338.2

UNICOM
122.8 (CTAF)



ELEV 249	TDZE 249
----------	----------

LIRL Rwy 5-23
REIL Rwy 5

CATEGORY	A	B	C	D
LNAV MDA	660-1	411 (500-1)		NA
CIRCLING	680-1	860-1		NA
	431 (500-1)	611 (700-1)		

NE-3, 15 JUL 2021 to 12 AUG 2021

NE-3, 15 JUL 2021 to 12 AUG 2021