

APP CRS	Rwy Idg	6100
183°	TDZE	2211
	Apt Elev	2211

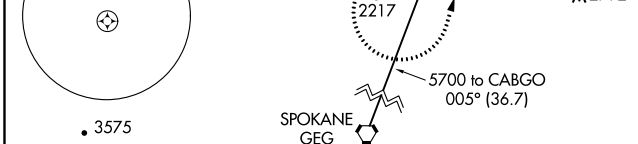
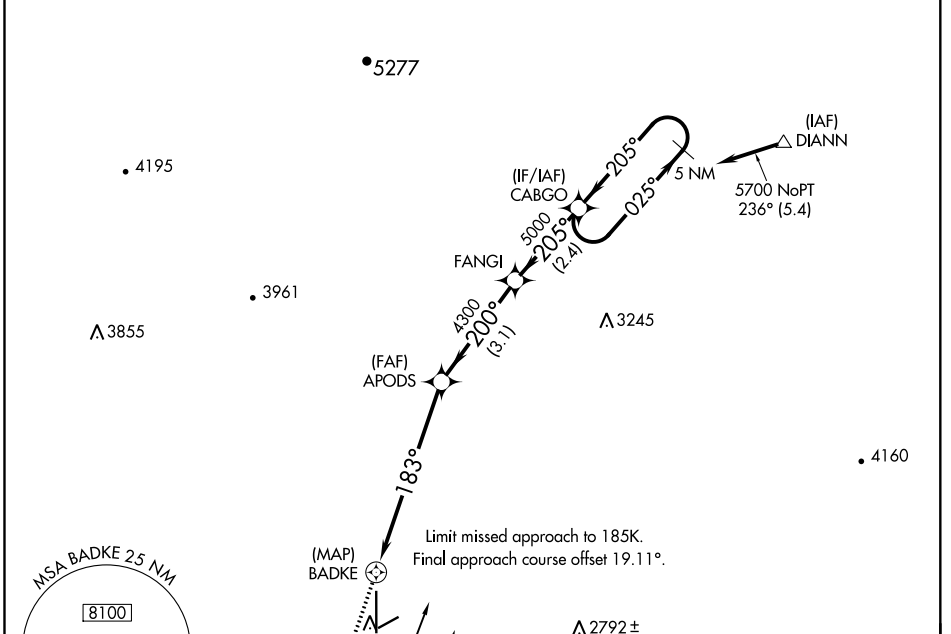
RNAV (GPS) RWY 16

DEER PARK (DEW)

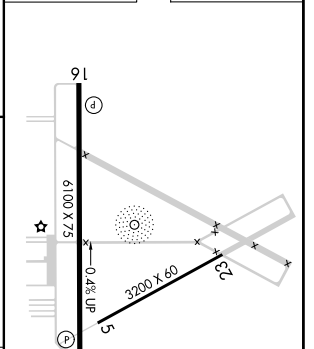
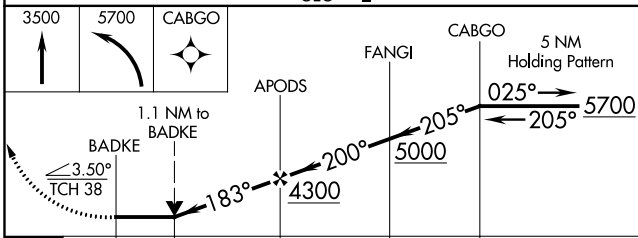
When local altimeter setting not received, procedure NA.
 DME/DME RNP-0.3 NA.
 Helicopter visibility reduction below 3/4 SM NA.
 Circling NA west of Rwy 16-34.

MISSED APPROACH: Climb to 3500 then climbing left turn to 5700 direct CABGO and hold.

ASOS 135.175	SPOKANE APP CON 123.75 282.25	UNICOM 123.0 (CTAF) 0
------------------------	---	---------------------------------



ELEV	2211	TDZE	2211
------	------	------	------



CATEGORY	A	B	C	D
LNVA MDA	2640-1	429 (500-1)	2640-1 1/4	429 (500-1 1/4)
CIRCLING	2700-1	489 (500-1)	2700-1 1/2	2860-2
			489 (500-1 1/2)	649 (700-2)



NW-1, 15 JUL 2021 to 12 AUG 2021

NW-1, 15 JUL 2021 to 12 AUG 2021

REIL Rwy 16 and 34
 MRL Rwy 16-34