

RNAV (GPS) RWY 16

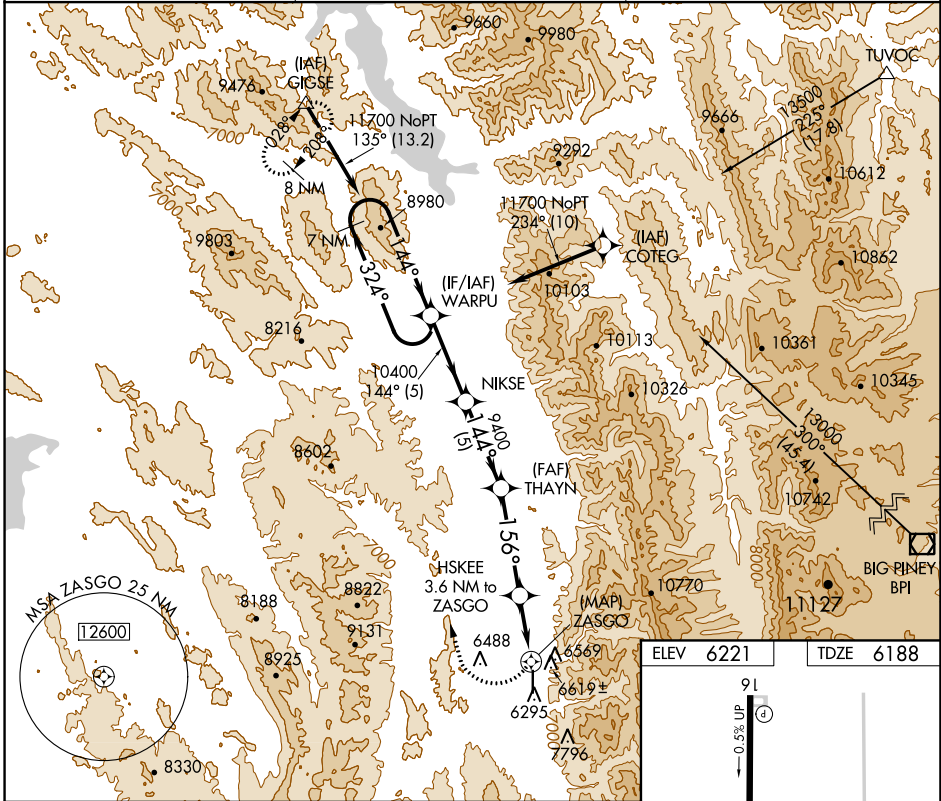
AFTON MUNI (AFO)

APP CRS 156°	Rwy Idg 7025
	TDZE 6188
	Apt Elev 6221

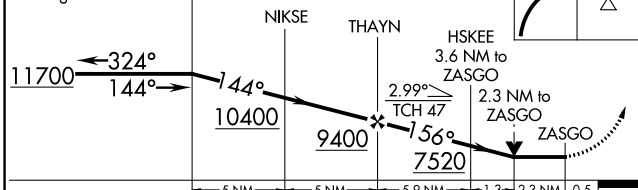
RNP APCH.
 ▼ If local altimeter setting not received, procedure NA.
 ▲ NA Circling NA east of Rwy 16-34. Rwy 16 helicopter visibility reduction below ¾ SM NA.
 ☁ -22°C

MISSED APPROACH: Climbing right turn to 11700 direct GIGSE and hold.

AWOS-3P 119.025	SALT LAKE CENTER 128.35 239.25	UNICOM 122.8 (CTAF) 0
---------------------------	--	---------------------------------



7 NM Holding Pattern WARPJU VGSI and descent angles not coincident (VGSI Angle 3.50/TCH 52). 11700 GIGSE



CATEGORY	A	B	C	D
LNVA MDA	7140-1¼ 952 (1000-1¼)	7140-1½ 952 (1000-1½)	7140-3 952 (1000-3)	NA
CIRCLING	7140-1¼ 919 (1000-1¼)	7140-1½ 919 (1000-1½)	7140-3 919 (1000-3)	NA

ELEV 6221	TDZE 6188
-----------	-----------

MIRL Rwy 16-34 0
 REIL Rws 16 and 34 0

NW-1, 15 JUL 2021 to 12 AUG 2021

NW-1, 15 JUL 2021 to 12 AUG 2021