

APP CRS <b>346°</b>	Rwy Idg <b>7025</b>
	TDZE <b>6221</b>
	Apt Elev <b>6221</b>

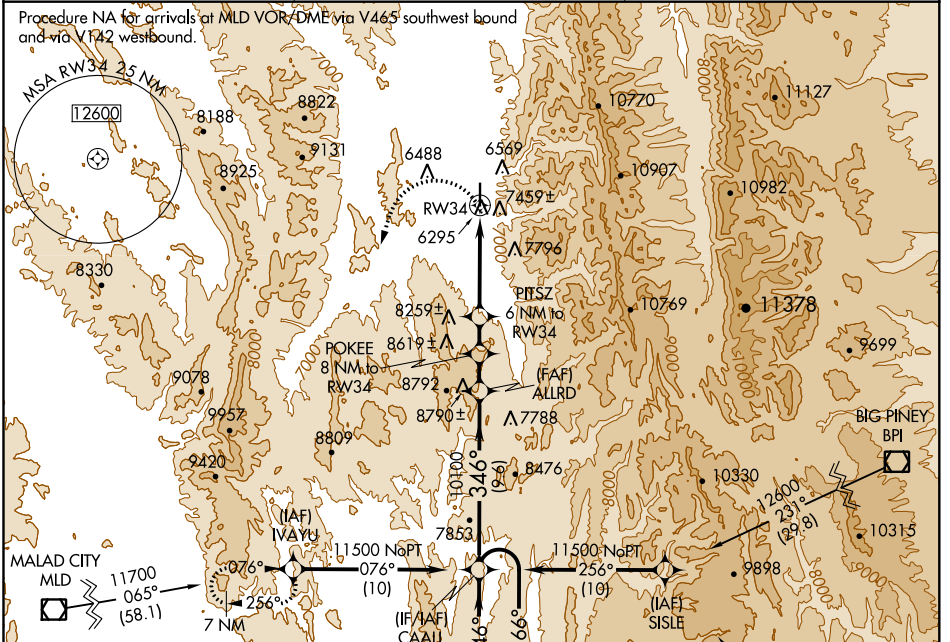
# RNAV (GPS) RWY 34

AFTON MUNI (AFO)

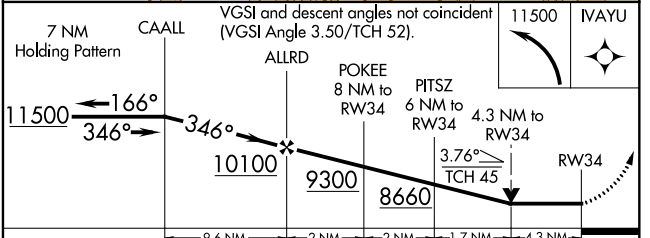
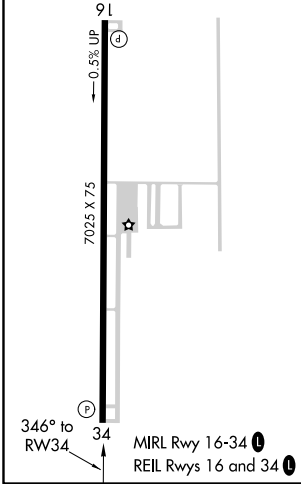
**NA** DME/DME RNP-0.3 NA. Circling NA east of Rwy 16-34. Helicopter visibility reduction below 3/4 SM NA. If local altimeter setting not received, procedure NA.

**MISSED APPROACH:** Climbing left turn to 11500 direct IVAYU and hold.

AWOS-3P <b>119.025</b>	SALT LAKE CENTER <b>128.35 239.25</b>	UNICOM <b>122.8 (CTAF)</b>
---------------------------	--	-------------------------------



ELEV 6221	TDZE 6221
-----------	-----------



CATEGORY	A	B	C	D
LNAV MDA	7620-1¼ 1399 (1400-1¼)	7620-1½ 1399 (1400-1½)	7620-3 1399 (1400-3)	NA
CIRCLING	7620-1¼ 1399 (1400-1¼)	7620-1½ 1399 (1400-1½)	7620-3 1399 (1400-3)	NA

NW-1, 15 JUL 2021 to 12 AUG 2021

NW-1, 15 JUL 2021 to 12 AUG 2021