

# RNAV (GPS) RWY 34

BAKERSFIELD MUNI (L45)

APP CRS <b>341°</b>	Rwy Idg TDZE Apt Elev	<b>4000</b> <b>377</b> <b>378</b>
------------------------	-----------------------------	---

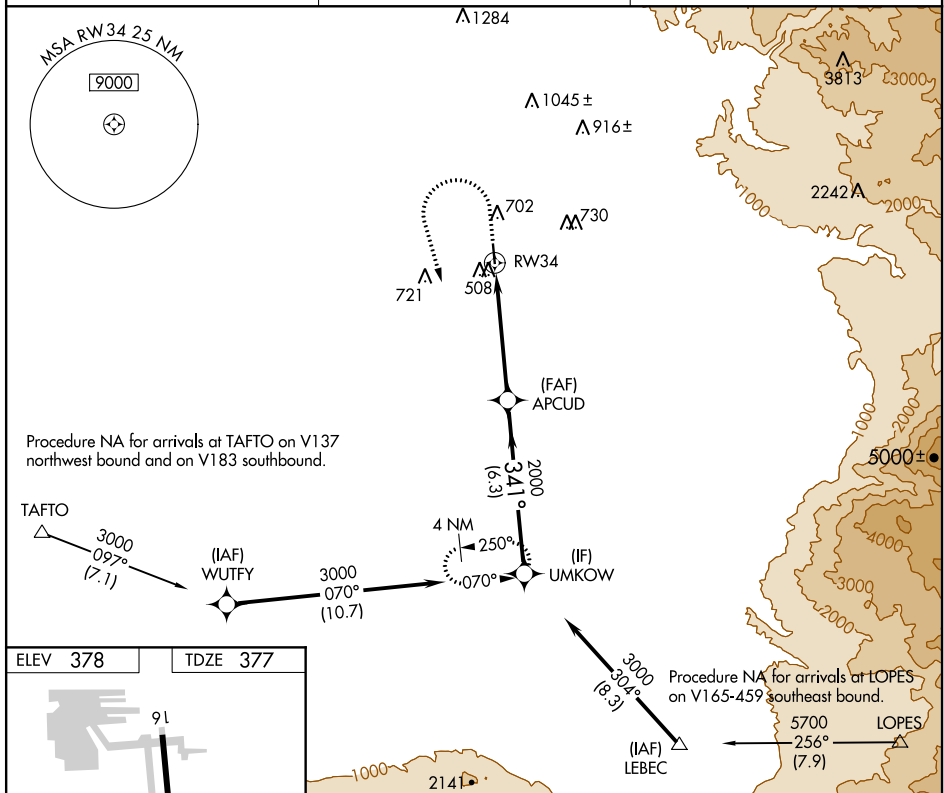
**NA** DME/DME RNP-0.3 NA. Use Meadows Fld altimeter setting. When Meadows Fld altimeter setting not received, use Porterville altimeter setting and increase all MDA 80 feet, increase LNAV and Circling Cat C and D visibility ¼ mile. Helicopter visibility reduction below ¾ SM NA. Night Landing Rwy 16 NA.

**MISSED APPROACH:** Climb to 1200 then climbing left turn to 3000 direct UMKOW and hold.

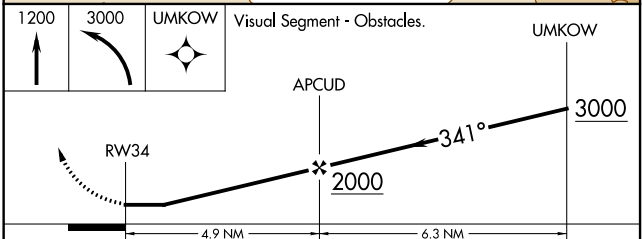
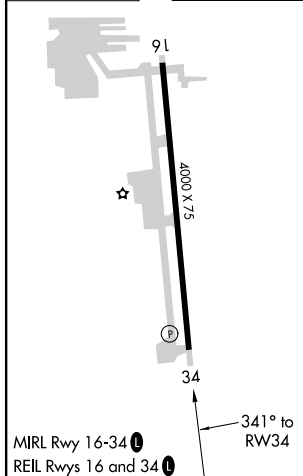
BFL ASOS  
**118.6**

BAKERSFIELD APP CON \*  
**126.45 270.3**

UNICOM  
**122.8 (CTAF) 0**



ELEV 378	TDZE 377
----------	----------



CATEGORY	A	B	C	D
LNAV MDA	840-1	463 (500-1)	840-1 3/8	463 (500-1 3/8)
<b>C</b> CIRCLING	1060-1	682 (700-1)	1120-2 1/4 742 (800-2 1/4)	1120-2 1/2 742 (800-2 1/2)

SW-3, 15 JUL 2021 to 12 AUG 2021

SW-3, 15 JUL 2021 to 12 AUG 2021