

VORTAC EHF 115.4 Chan 101	APP CRS 319°	Rwy Idg TDZE Apt Elev	4000 377 378
---	------------------------	-----------------------------	---

VOR/DME RWY 34

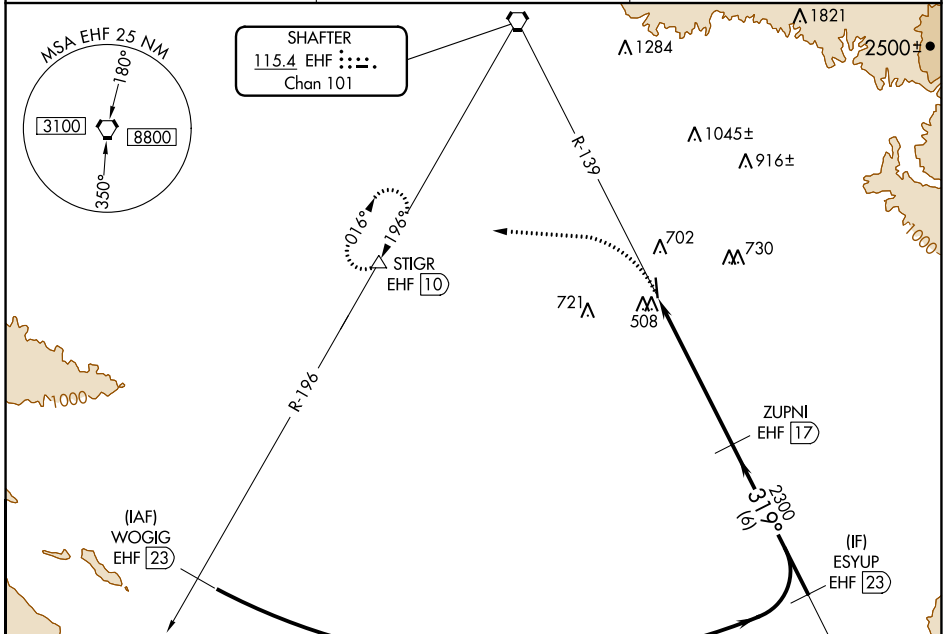
BAKERSFIELD MUNI (L45)

▼ Use Meadows Fld altimeter setting. When Meadows Fld altimeter setting not received, use Porterville altimeter setting and increase all MDA 80 feet, increase S-34 and Circling Cat C and D visibility ¼ mile. Visibility reduction by helicopters below ¾ SM NA. Night Landing Rwy 16 NA.

▲ NA

MISSED APPROACH: Climbing left turn to 3000 on heading 260° to EHF R-196 to STIGR/EHF 10 DME and hold, continue climb-in-hold to 3000.

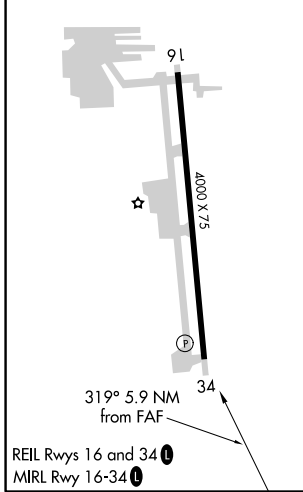
BFL ASOS 118.6	BAKERSFIELD APP CON★ 126.45 270.3	UNICOM 122.8 (CTAF) 0
--------------------------	---	---------------------------------



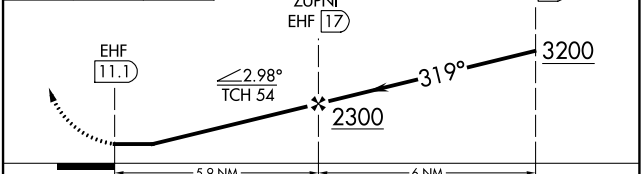
SW-3, 15 JUL 2021 to 12 AUG 2021

SW-3, 15 JUL 2021 to 12 AUG 2021

ELEV 378	TDZE 377
-----------------	-----------------



3000 hdg 260° EHF R-196 STIGR △ VGS1 and descent angles not coincident (VGS1 Angle 4.10/TCH 53).



CATEGORY	A	B	C	D
S-34	900-1	523 (600-1)	900-1½	523 (600-1½)
C CIRCLING	1060-1	682 (700-1)	1120-2¼ 742 (800-2¼)	1120-2½ 742 (800-2½)