

APP CRS	Rwy Idg	3181
109°	TDZE	998
	Apt Elev	1003

RNAV (GPS) RWY 12

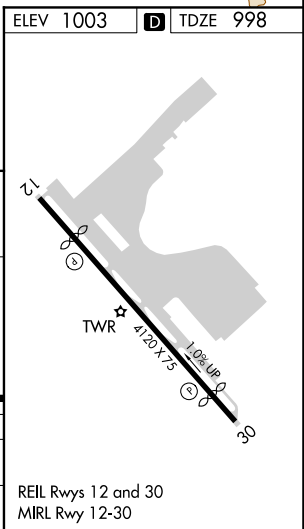
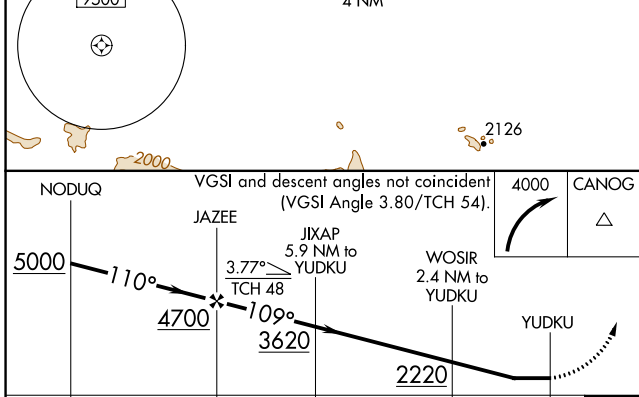
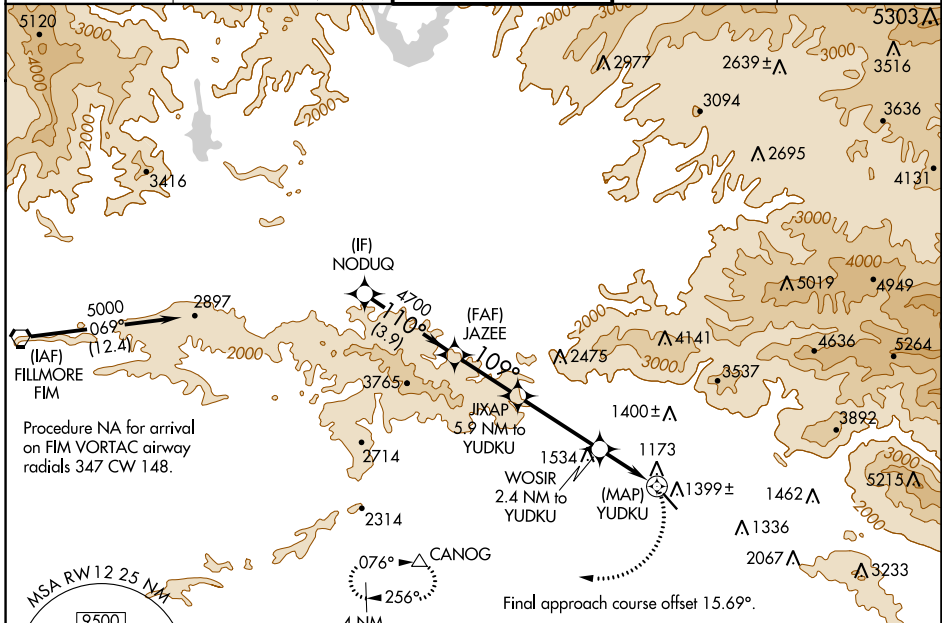
WHITEMAN (WHP)

RNP APCH.

NA Procedure NA at night. When local altimeter setting not received, use Burbank altimeter setting. Rwy 12 helicopter visibility reduction below 1 SM NA.

MISSED APPROACH: Climbing right turn to 4000 direct CANOG and hold.

ATIS 132.1	SOCAL APP CON 120.4 360.6 (NORTH) 134.2 338.2 (WEST)	WHITEMAN TOWER * 135.0 (CTAF)	GND CON 125.0	UNICOM 122.95
----------------------	--	---	-------------------------	-------------------------



CATEGORY	A	B	C	D
LNVA MDA	1660-1	662 (700-1)	1660-1 $\frac{7}{8}$ 662 (700-1 $\frac{7}{8}$)	NA
C CIRCLING	1700-1 697 (700-1)	1860-1 $\frac{1}{4}$ 857 (900-1 $\frac{1}{4}$)	2200-3 1197 (1200-3)	NA

REIL Rwy 12 and 30
MIRL Rwy 12-30

SW-3, 15 JUL 2021 to 12 AUG 2021

SW-3, 15 JUL 2021 to 12 AUG 2021