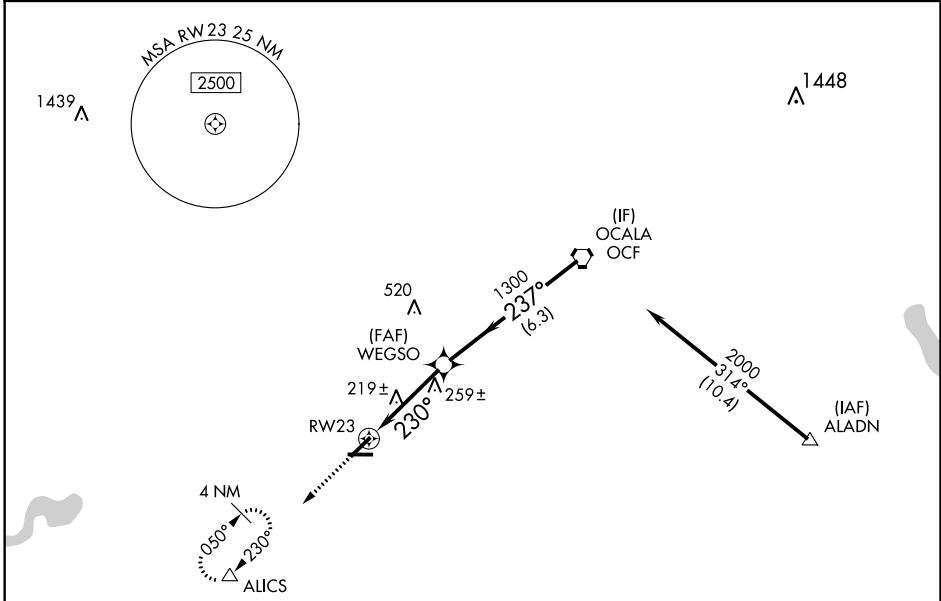


WAAS CH <b>48828</b> <b>W23A</b>	APP CRS <b>230°</b>	Rwy Idg <b>5000</b> TDZE <b>65</b> Apt Elev <b>65</b>
--	------------------------	---

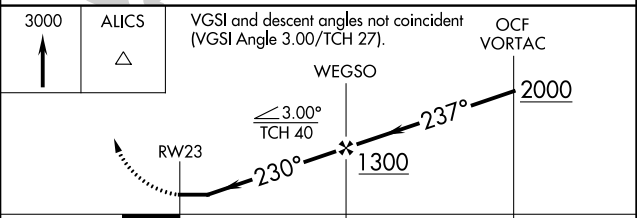
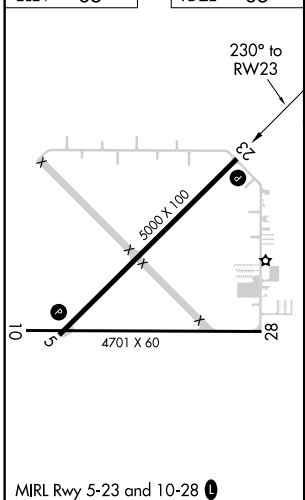
# RNAV (GPS) RWY 23

MARION COUNTY (X35)

RNP APCH.		MISSED APPROACH: Climb to 3000 direct ALICS and hold, continue climb-in-hold to 3000.
<p>▼ ▲ NA</p> <p>Rwy 23 helicopter visibility reduction below 1 SM NA. Use Ocala altimeter setting; when not received, use Leesburg altimeter setting and increase all MDAs 60 feet and increase LP and LNAV Cats C and D visibility 1/8 SM. Procedure NA at night.</p>		
OCF AWOS-3PT <b>128.125</b>	JACKSONVILLE APP CON <b>118.6 251.15</b>	UNICOM <b>122.8 (CTAF) 0</b>



ELEV 65	TDZE 65
---------	---------



CATEGORY	A	B	C	D
LP MDA	500-1	435 (500-1)	500-1¼	435 (500-1¼)
LNAV MDA	540-1	475 (500-1)	540-1¾	475 (500-1¾)
CIRCLING	540-1 475 (500-1)	560-1 495 (500-1)	560-1½ 495 (500-1½)	620-2 555 (600-2)

SE-3, 15 JUL 2021 to 12 AUG 2021

SE-3, 15 JUL 2021 to 12 AUG 2021