

| | | |
|--|------------------------|---|
| WAAS CH 40310 W14A | APP CRS 142° | Rwy Idg 4300 TDZE 21 Apt Elev 22 |
|--|------------------------|---|

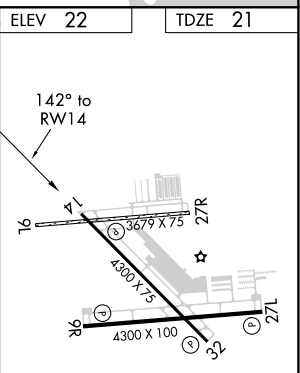
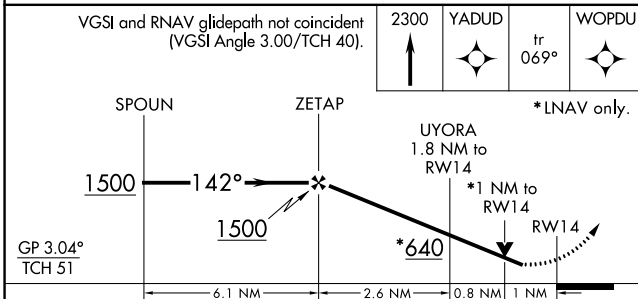
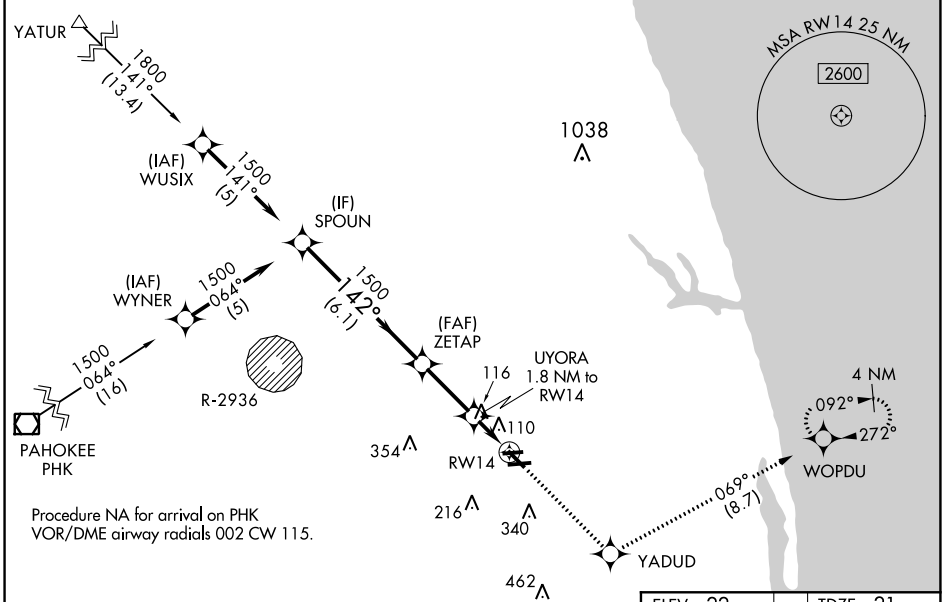
RNAV (GPS) RWY 14

NORTH PALM BEACH COUNTY GENERAL AVIATION (F45)

⚠ Circling NA to Rwys 9L and 27R. For uncompensated Baro-VNAV systems, LNAV/VNAV NA below -1.5°C (5°F) or above 54°C (130°F). DME/DME RNP-0.3 NA. When local altimeter not received, use Palm Beach Intl altimeter setting and increase LPV DA to 352 feet; increase LNAV/VNAV DA to 412 feet and all visibilities 1/8 SM; increase all MDA 40 feet and LNAV Cats C/D visibility 1/8 SM. Rwy 14 helicopter visibility reduction below 3/4 SM NA. Baro-VNAV and VDP NA when using Palm Beach Intl altimeter setting.

MISSED APPROACH: Climb to 2300 direct YADUD and on track 069° to WOPDU and hold.

| | | | |
|--------------------------|--|----------------------------|-----------------------------------|
| AWOS-3 119.975 | PALM BEACH APP CON 128.3 317.4 | CLNC DEL 120.825 | UNICOM 123.075 (CTAF) 0 |
|--------------------------|--|----------------------------|-----------------------------------|



| CATEGORY | A | B | C | D |
|-----------------|----------------------|----------------------|----------------------|------------------------------|
| LPV DA | | 324-7/8 | 303 (400-7/8) | |
| LNAV/VNAV DA | | 384-1 | 363 (400-1) | |
| LNAV MDA | | 380-1 | 359 (400-1) | |
| CIRCLING | 460-1 438 (500-1) | 480-1 458 (500-1) | 700-2 678 (800-2) | 720-2 1/4 698 (700-2 1/4) |

MRL Rwys 9R-27L and 14-32 **0**
REIL Rwys 9R, 14, 27L and 32 **0**

SE-3, 15 JUL 2021 to 12 AUG 2021

SE-3, 15 JUL 2021 to 12 AUG 2021