

WAAS CH <b>93910</b> <b>W27A</b>	APP CRS <b>272°</b>	Rwy Idg <b>4300</b> TDZE <b>22</b> Apt Elev <b>22</b>
--	------------------------	---

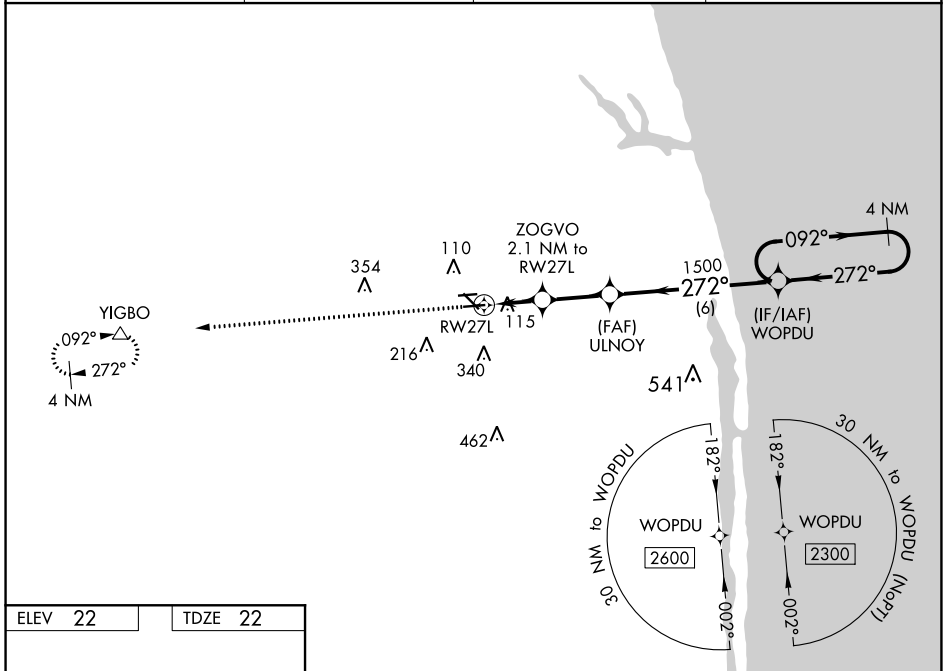
# RNAV (GPS) RWY 27L

NORTH PALM BEACH COUNTY GENERAL AVIATION (F45)

**⚠** Circling NA to Rwy 9L and 27R. For uncompensated Baro-VNAV systems, LNAV/VNAV NA below -1.5°C (5°F) or above 54°C (130°F). Baro-VNAV and VDP NA when using Palm Beach Intl altimeter setting. DME/DME RNP-0.3 NA. When local altimeter not received, use Palm Beach Intl altimeter setting and increase LPV DA to 369 feet and all visibilities 1/8 SM; increase LNAV/VNAV DA to 423 feet and all visibilities 1/8 SM; increase all MDA 40 feet and Cat C/D visibility 1/8 SM. Rwy 27L helicopter visibility reduction below 3/4 SM NA.

**⚠** MISSED APPROACH: Climb to 2500 direct YIGBO and hold.

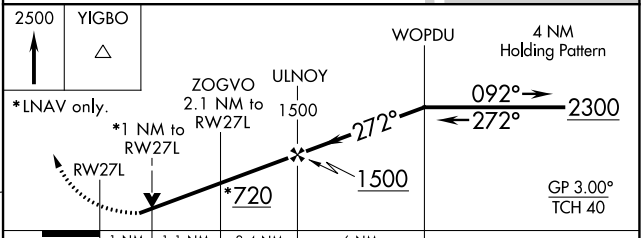
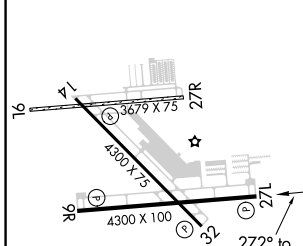
AWOS-3 <b>119.975</b>	PALM BEACH APP CON <b>128.3 317.4</b>	CLNC DEL <b>120.825</b>	UNICOM <b>123.075 (CTAF)</b>
--------------------------	--	----------------------------	---------------------------------



SE-3, 15 JUL 2021 to 12 AUG 2021

SE-3, 15 JUL 2021 to 12 AUG 2021

ELEV <b>22</b>	TDZE <b>22</b>
----------------	----------------



CATEGORY	A	B	C	D
LPV DA		341-7/8	319 (400-7/8)	
LNAV/VNAV DA		395-1	373 (400-1)	
LNAV MDA		380-1	358 (400-1)	
<b>C</b> CIRCLING	460-1 438 (500-1)	480-1 458 (500-1)	700-2 678 (700-2)	720-2 1/4 698 (700-2 1/4)

MIRL Rwy 9R-27L and 14-32 **⚠**  
REIL Rwy 9R, 14, 27L and 32 **⚠**