

APP CRS	Rwy Idg	2443
322°	TDZE	7
	Apt Elev	7

RNAV (GPS) RWY 31

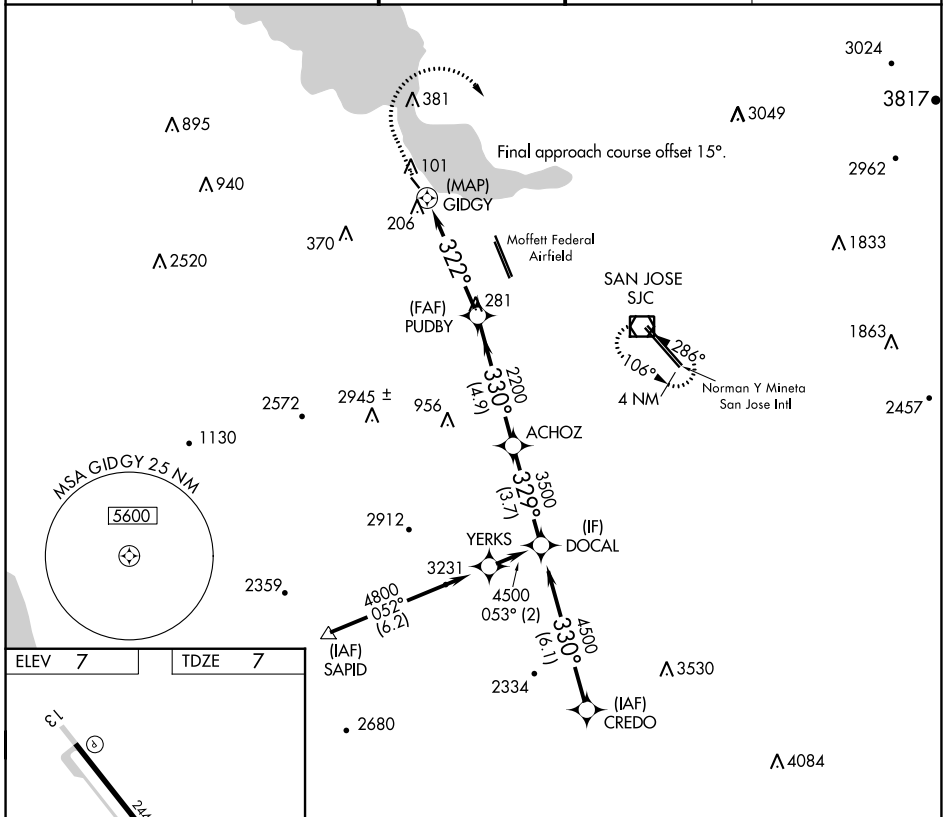
PALO ALTO (PAO)

RNP APCH

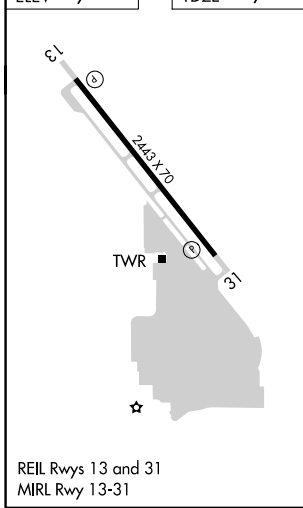
▼ Circling NA southwest of Rwy 13-31. Rwy 31 helicopter visibility reduction below 1 SM NA. Procedure NA at night. When control tower closed, use Norman Y Mineta San Jose Intl altimeter setting and increase all MDAs 40 feet.

MISSED APPROACH: Climb to 1400 then climbing right turn to 3000 direct SJC VOR/DME and hold.

ATIS 135.275	NORCAL APP CON 121.3 270.35	PALO ALTO TOWER* 118.6 (CTAF)	GND CON 125.0	UNICOM 122.95
------------------------	---------------------------------------	--	-------------------------	-------------------------



ELEV	7	TDZE	7
------	---	------	---



REIL Rws 13 and 31
MIRL Rwy 13-31

1400	3000	SJC	
↑	↷	☐	
GIDGY → 322° → PUDBY		ACHOZ → 329° → DOCAL	
4.00° TCH 30		330° → 3500	
0.5	4.6 NM	4.9 NM	3.7 NM
CATEGORY	A	B	C
LNAV MDA	460-1	453 (500-1)	NA
<input checked="" type="checkbox"/> CIRCLING	460-1	520-1	NA
	453 (500-1)	513 (600-1)	

SW-2, 15 JUL 2021 to 12 AUG 2021

SW-2, 15 JUL 2021 to 12 AUG 2021