

APP CRS	Rwy Idg	3200
099°	TDZE	400
	Apt Elev	400

RNAV (GPS) RWY 10

WHITFORDS (B16)

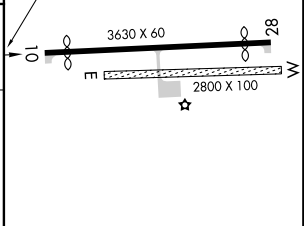
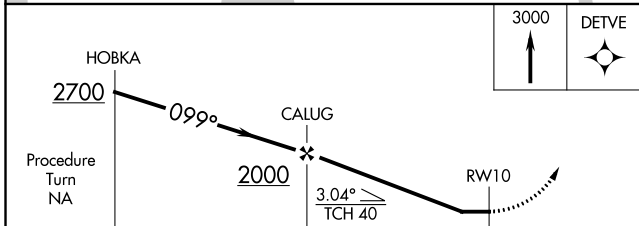
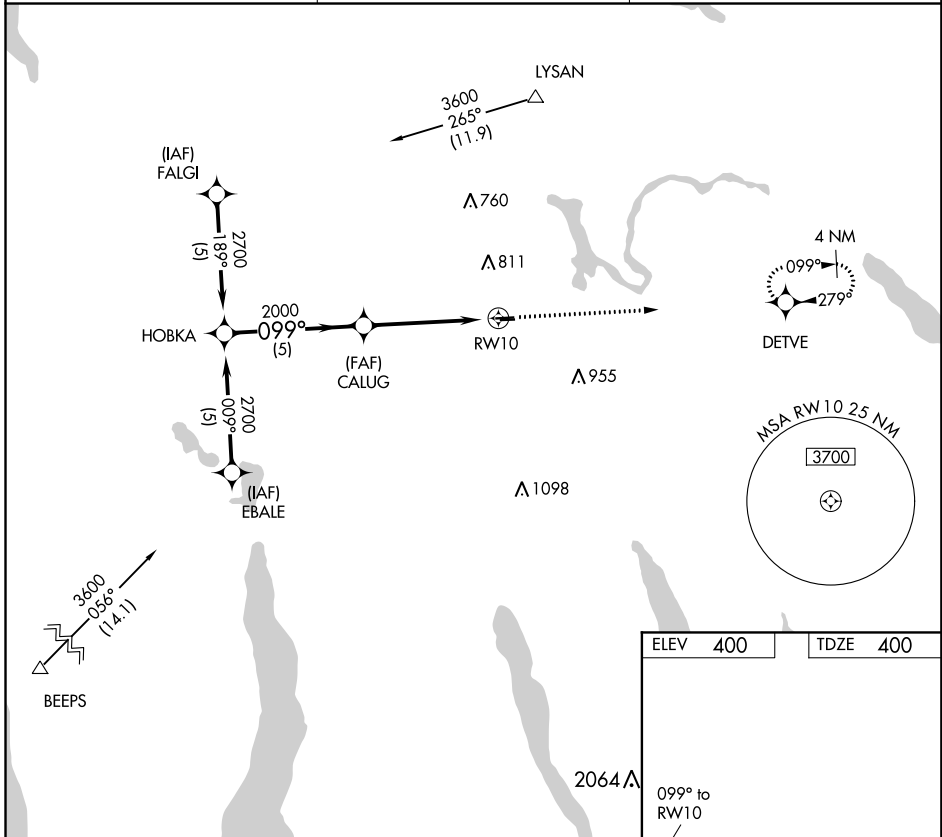
RNP APCH.
<p>▼ Use Syracuse altimeter setting. Procedure NA at night.</p> <p>▲ NA Rwy 10 helicopter visibility reduction below 1 SM NA.</p>

MISSED APPROACH: Climb to 3000 direct DETVE WP and hold.

SYRACUSE APP CON
126.125 269.125

UNICOM
122.8 (CTAF)

122.7



CATEGORY	A	B	C	D
LNAV MDA	1020-1	620 (700-1)	NA	

NE-2, 15 JUL 2021 to 12 AUG 2021

NE-2, 15 JUL 2021 to 12 AUG 2021